

# SCENIC HUDSON PARK QUEST

FOUNDRY DOCK PARK, COLD SPRING

## QUESTING:

Follow this Quest to learn about the history and ecology at Scenic Hudson's Foundry Dock Park. At the end of your Quest, you'll find a box. Inside is a register for you to sign, a special stamp to mark this booklet, and more information about things you probably came across during your Quest. Don't forget to put the box back where you found it so other people can discover it too. The adventure takes about 45 minutes. Have fun!

## DIRECTIONS:

From Rte 9D: West on Main St., left on Lunn Terrace. Left on Market St.

## OPERATING HOURS:

Open year-round from dawn to dusk.



**SCENIC  
HUDSON**

## SCENIC HUDSON PARKQUEST

*To begin your Park Quest, stroll to the beach, where kayaks are launched.*

### THE HUDSON RIVER

Native Americans called this “the river that flows both ways.” That’s because from New York City to Troy, the Hudson is an estuary – an arm of the Atlantic Ocean subject to its tides. Can you tell which way the river is moving now? Some ocean fish, such as sturgeon and shad, swim up the estuary to spawn. Eventually, they and their offspring return to the Atlantic. So keeping the Hudson clean and healthy not only makes a difference for those who live near it or in it, but for the future of creatures in our oceans as well.



NYS DEC



### SCENIC HUDSON & FOUNDRY DOCK PARK

Scenic Hudson purchased this waterfront property in 1996 to make sure it always would be a place where people can connect with the beauty, power and spirit of the Hudson River. Today many kayakers begin their paddles here, while others simply come to sit and enjoy views of the Hudson Highlands – considered by many to be the most majestic and historic stretch of the river. The buildings across the river to your left are the U.S. Military Academy at West Point. In the distance to your right, also on the opposite shore, is Storm King Mountain, where Scenic Hudson got its start by halting plans to build a huge hydroelectric plant that would have destroyed this magnificent scenery. That 17-year battle is considered the birth of America’s modern grassroots environmental movement.



Nick Zungoli

*Walking south – follow the path of the old dock up the “railroad track” ramp. Pick a bench and enjoy majestic views of the Hudson Highlands and the Hudson River.*

*Look at the photo below. You are sitting at the spot where the land meets the dock.*

### THE LONG DOCK

The 600-foot long dock – reaching out to the deepest part of the river, where big ships could anchor – allowed iron ore, scrap iron, coal, wood and other raw materials to be brought to the West Point Foundry. Cannons,

shells, engines and other foundry products were shipped out. Why does the walkway you’re standing on look like train tracks? It marks the site of a rail line that connected the dock to the foundry, about half a mile away. Look carefully at low tide and you might see part of the dock’s platform about 600 feet from shore.



## SCENIC HUDSON PARKQUEST

Putnam County Historical Society & Foundry School Museum



### ON THE WATERFRONT

After the War of 1812, President James Madison named Cold Spring one of four sites to build a foundry to produce cannons, shot and shells for the U.S. government. Why Cold Spring? Because of 1) its location on the Hudson River; 2) rushing Foundry Brook that furnished power; and 3) abundant nearby supplies of raw materials, especially iron ore and hardwood trees (needed to make charcoal, to melt the ore). When the West Point Foundry opened in 1818, workers and their families were provided with everything they needed – housing, a school, even a chapel. Foundry Dock Park also played a big role in the West Point Foundry's success. It was the site of the foundry's busy industrial wharf and main shipping dock.

*Now move on to another wonderful view point. Follow the path toward the kiosk, then head to the right, towards some more benches. From here you can see the entrance to Foundry Cove.*

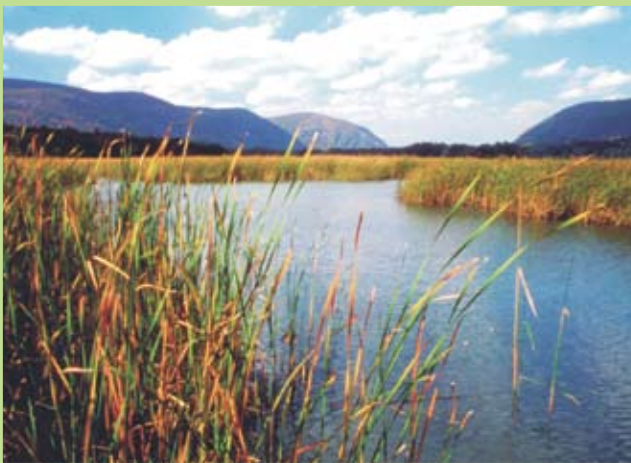
### THE WEST POINT FOUNDRY

In business until 1911, West Point Foundry was one of America's largest, most modern ironworks, manufacturing steam engines, locomotives and water wheels that sparked the Industrial Revolution. It also produced the pipes for New York City's water system and weapons for the U.S. government, including the Parrott gun, a cannon developed at the foundry that's credited with winning the Civil War. Today, archaeologists have uncovered important information about the foundry, whose ruins are located in Scenic Hudson's West Point Foundry Preserve, a short walk from here. We're designing trails and other exciting features so visitors will fully experience the foundry's history.



Putnam County Historical Society  
& Foundry School Museum

Constitution Marsh Audubon Center and Sanctuary



### EAST FOUNDRY COVE

Located just south of Foundry Dock Park – and a popular destination for kayakers – East Foundry Cove provides a safe habitat for many plants, fish, birds and mammals. A nearby factory once dumped so many chemicals in the marsh that it was called one of the world's most polluted places. Today, thanks to a huge cleanup, visitors can experience the natural wonders of this Hudson River tidal marsh. From there, you can continue paddling into Constitution Marsh Audubon Center and Sanctuary (left), which also features a 700-foot boardwalk.

*Now that you've completed your historical and ecological journey, its time to find the Quest box. Turn the page for final clues.*

## Who's Scenic Hudson?

We're a group of dedicated people who care about the area we live in – the Hudson River Valley. Forty-five years ago, our founders fought to protect a mountain from being made into a power plant. Since then, we've continued to work together with local communities to protect special places. We've created or enhanced 40 parks and preserves for you to enjoy.

For more information about our parks, visit [www.scenichudson.org/parks](http://www.scenichudson.org/parks).



Designed by: Hudson & Pacific Designs

The design and construction of Foundry Dock Park was funded in part by a NYS Dept. of Environmental Conservation Hudson River Estuary Grant.

*Walk back to the beginning of the railroad ties. Count up 12 ties and look to your left. Do you see any stones that are out of place? Look closely to find the Quest box. You only have to move one stone.*

*When you're done, please place the stone back over the Quest box so others can enjoy finding it.*

## Why we protected this place...

Though less than an acre, Foundry Dock Park is an important place for people to connect with the inspiring beauty of the Hudson River and Highlands, and it provides access for kayakers and canoeists to the river and adjacent Constitution Marsh. As the former industrial wharf for the West Point Foundry, the park also preserves a significant part of Cold Spring's history.

**PLACE QUEST STAMP HERE**



Become part of our online community at: [www.scenichudson.org](http://www.scenichudson.org)

ParkQuest created by Susan Hereth.

Let us know what you think of this Quest. E-mail your comments to [shereth@scenichudson.org](mailto:shereth@scenichudson.org).