

A PATH FORWARD

Identifying Least-Conflict Solar PV Development In California's San Joaquin Valley

Dustin Pearce
March 27, 2018

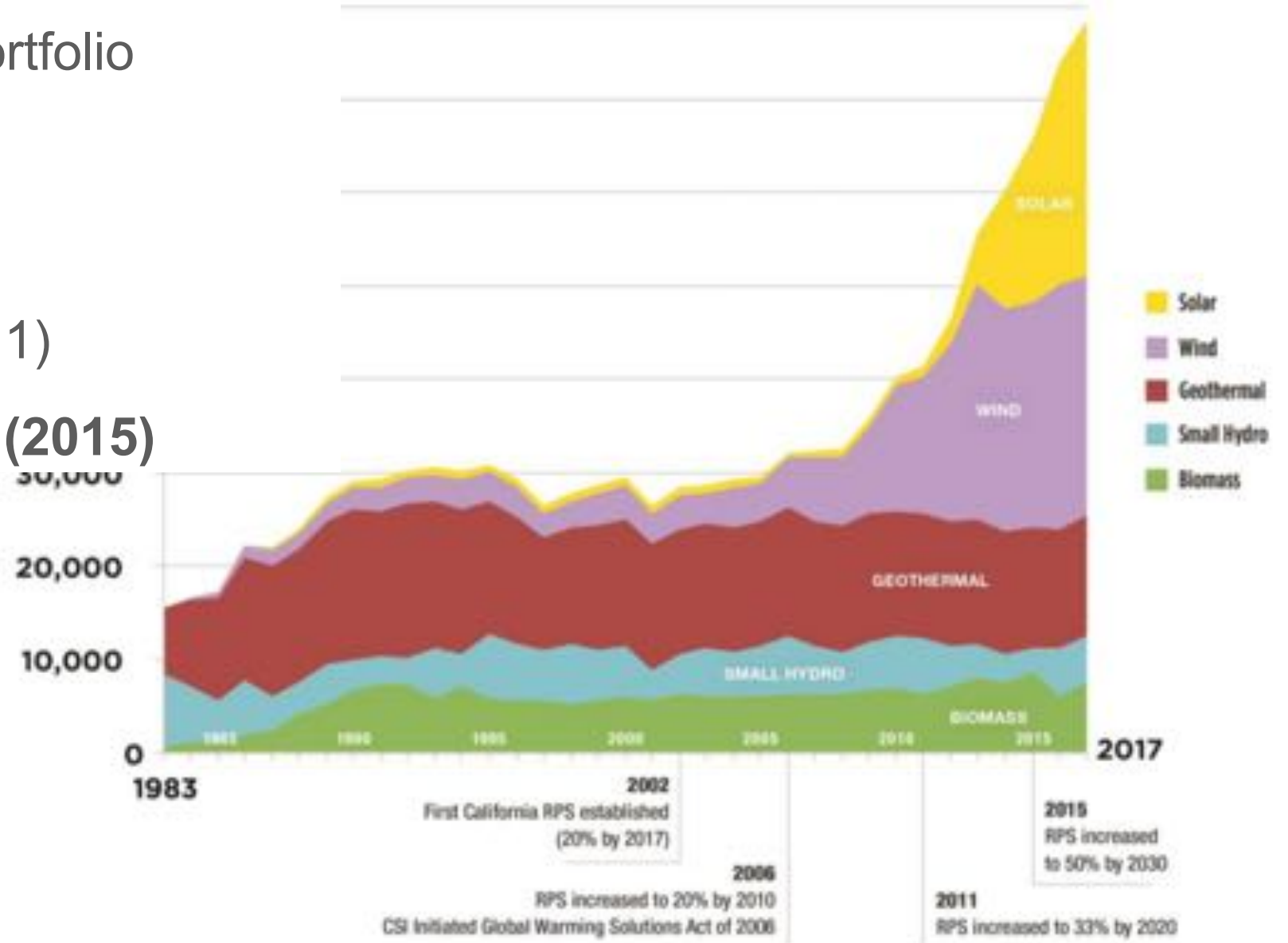


Background



Background

- California's Renewable Portfolio Standards
 - 20% by 2017 (2002)
 - 33% by 2020 (2011)
 - **50% by 2030 (2015)**



Background



Background



Background



Study Area

- 8 San Joaquin Valley Counties
- Kern, Kings, Tulare, Fresno, Madera, Merced, Stanislaus, San Joaquin
- 9,500,000 Acres



The Process

- A **non-binding and non-regulatory** planning effort developed through an open and transparent platform
 - San Joaquin Valley Gateway
- High level resource planning (Planning 101) made to **identify opportunities** within the region
- **Stakeholder driven mapping** and criteria development
 - Creating a snapshot of resource value using best available data and information

Sign Up

Sign In

Support

San Joaquin Valley Gateway

Search by keyword or location

powered by DATA BASIN

Get Started

Explore

Create

My Workspace

What is the San Joaquin Valley Gateway?

What can I do?

How do I start exploring?

The San Joaquin Valley Gateway provides a regional tool to help planners and resource managers develop and implement integrated multiple-benefit solutions for long-term environmental and economic sustainability. The Gateway also showcases programs and projects that have used this information resource to address resource conflicts in the Valley.

Get started quickly with the San Joaquin Valley Gateway

Take a Tour

Least Conflict Solar

Greenprint

A PATH FORWARD

Identifying Least-Conflict Solar PV Development in California's San Joaquin Valley

The report 'A Path Forward' outlines the stakeholder-led process initiated in June 2015 that explored how multiple and diverse parties could quickly identify least-conflict lands for solar photovoltaic development within the San Joaquin Valley.

[Read more about the Least Conflict Solar Analysis](#)

A Path Forward report

Report Appendices

Least Conflict Solar Analysis - A Path Forward

This gallery contains the data layers assembled by the Least Conflict Solar team.

Explore Least Conflict Solar Datasets

San Joaquin Valley - Environmental Conservation

San Joaquin Valley - Energy

San Joaquin Valley - Farmland Conservation

SAN JOAQUIN VALLEY

Greenprint

The SJV Greenprint was created as a voluntary, stakeholder-driven project to help the eight counties of the San Joaquin Valley create long-term environmental and economic sustainability in the face of growth, development patterns, and climate challenges.

[Read more about SJV Greenprint](#)

Key Questions for Resource Management

Phase II Summary Report

Explore Greenprint Datasets

This gallery contains the data layers assembled by the SJV Greenprint team.

Explore Greenprint Pilot Projects

Helping GSAs to Identify Optimal Groundwater Replenishment Options

Exploring the Land-Water Intersection in the San Joaquin Valley

Watershed Enhancement Strategies For Groundwater Sustainability

ABOUT DATA BASIN | TERMS OF USE | SUPPORT SERVICES | CONTACT US

© 2018 Conservation Biology Institute

San Joaquin Valley Gateway

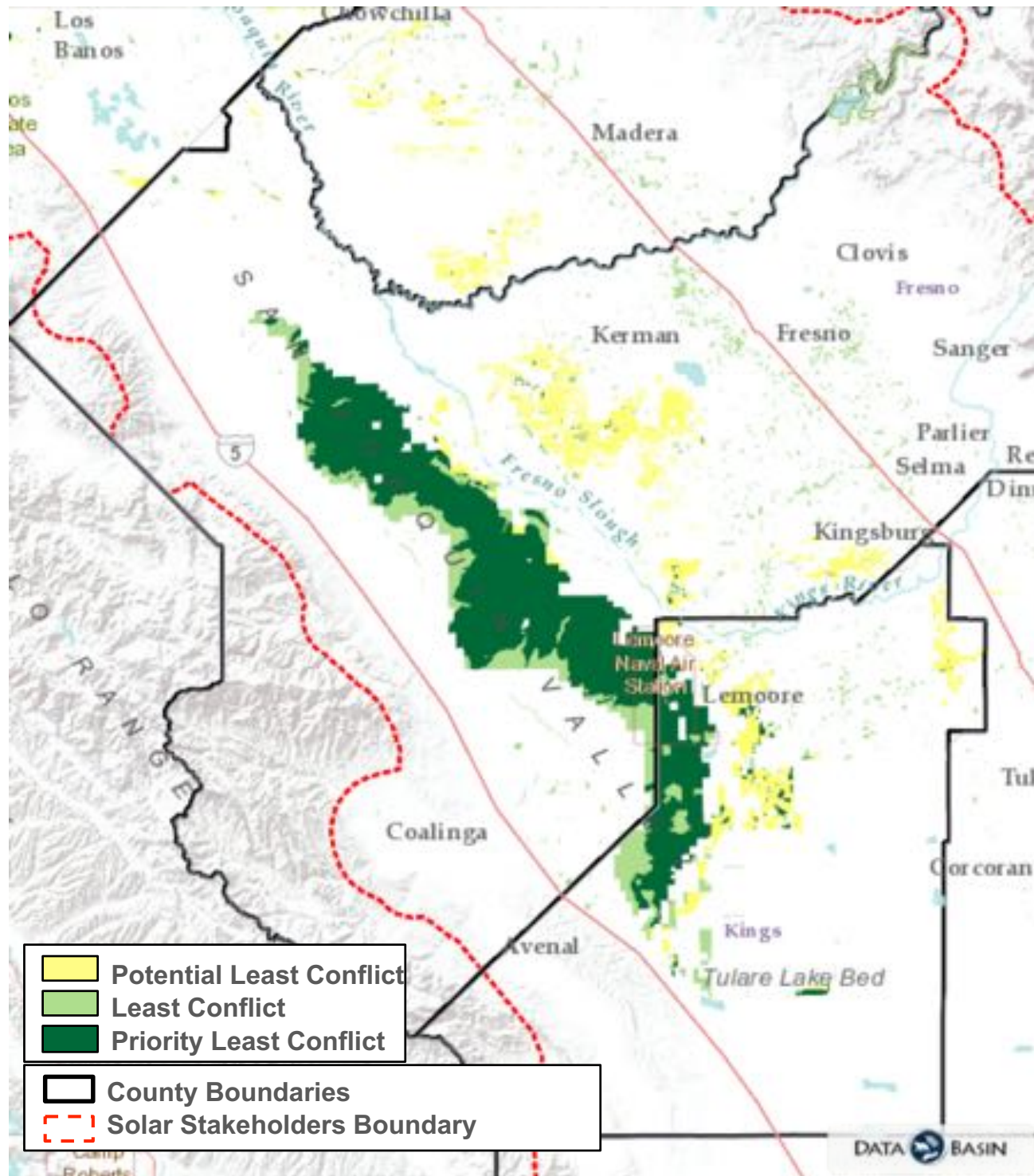
- Transparent and public mapping platform
- Provides a resource for future planning in the region with data that has been vetted by stakeholders and agencies
- Allows for private and public groups, data/content sharing, and user controlled access
- <https://sjvp.databasin.org/>

Stakeholder Groups

- Solar Industry Stakeholders
- Agricultural Rangeland Stakeholders
- Environmental Conservation Stakeholders
- Agricultural Farmland Stakeholders
- Solar Transmission Stakeholders
- Tribal Governments
- Military Stakeholders
- County, State, and Federal Agency Staff Advisors

Results and Impacts

- Intersection of the mapping exercises least conflict lands
- **Total Least Conflict Acreage:**
 - **471,495 Acres**
- Potential Least Conflict: 117,263 Acres
- Least Conflict: 151,901 Acres
- Priority Least Conflict: 202,330 Acres





Results and Impacts

-
- Agency lead Transmission Planning
 - Model for environmental planning in the Mojave Desert

Lessons Learned

- Decision making led by collaboration, sharing, and ease of access lead to better solutions
- Lower the barriers to participation
- Engaged stakeholders promote the process and the results

Thank You

- Contact Information:
 - Dustin Pearce
 - dustin.pearce@consbio.org
 - databasin.org
 - sjvp.databasin.org

