



Scenic Hudson's Solar Mapping Tool for Your Hudson Valley Community

TIPS FOR GETTING THE MOST OUT OF THE SOLAR MAPPING TOOL

- You can use the Workbook throughout Part III to help keep track of your thoughts and take-aways and apply them to Part IV. Click [here](#) for a printable PDF version, or click [here](#) for a word processor version.
- You can have different Parts of the Solar Mapping Tool open at the same time in different browser tabs or windows. For example, you might want to have the Part IV's fully functional map open, but also keep Part III open to refer back to information about each data layer. To open a Part in a separate browser tab, hover over a link to that Part, right-click (Windows) or hold down the Control key and click (Apple), then select from the pop-up menu to open the link in a new browser tab or window.

FREQUENTLY ASKED QUESTIONS

Click on each Question to see the answer. Many questions and answers are only relevant while using Part IV of the Solar Mapping Tool.

[Q: The words on the left side are cut off at the bottom – how can I see the rest of the text?](#)

[Q: Why can't I see all the Layer Group icons at the bottom of the screen?](#)

[Q: Why doesn't the Terrain Basemap load?](#)

[Q: Where can I find metadata or technical details for each data layer?](#)

[Q: The background map loaded, and I can zoom in and out – why can't I see where to turn layers on and off or any other buttons?](#)

[Q: I turned on a data layer but it seems like it's not loading?](#)

[Q: Where can I find a key for the symbology \(different colors or symbols on the map\)?](#)

[Q: How do I use the Draw Tool in Part IV?](#)

[Q: How can I turn all the layers on or off at once?](#)

[Q: How do I view the pop-up for one layer instead of another when multiple layers are on?](#)

[\(Return to list of questions\)](#)

Q: The words on the left side are cut off at the bottom – how can I see the rest of the text?

A: Click in an area without text on the left side of the screen to make sure that side is activated, then scroll down using either your mouse or the down-arrow key on your keyboard.

Q: Why can't I see all the Layer Group icons at the bottom of the screen?

A: On some screens, you may have to scroll to the left and right to access all layer groups. Scroll buttons are circled below in red.



Q: Why doesn't the Terrain Basemap load?

A: The Terrain Basemap will not load if the map is zoomed in too far. The Topographic Basemap may be a useful alternative.

Q: Where can I find metadata or technical details for each data layer?

A: There is a compiled list of data layers with sources for each available [here](#).

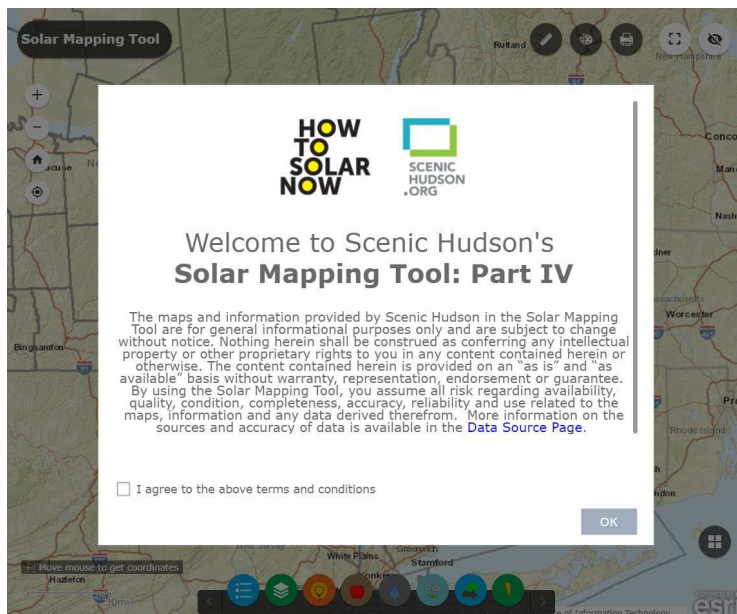
[\(Return to list of questions\)](#)

Q: The background map loaded, and I can zoom in and out – why can't I see where to turn layers on and off or any other buttons?

A: Occasionally, the Solar Mapping Tool fails to load properly. This is often indicated by a lack of the splash screen (see second image below). If the map loads without first displaying the splash screen, refresh your browser – it may take a couple tries before it loads properly. On slower internet connections, it may take several seconds before the map fully loads and the splash page appears.

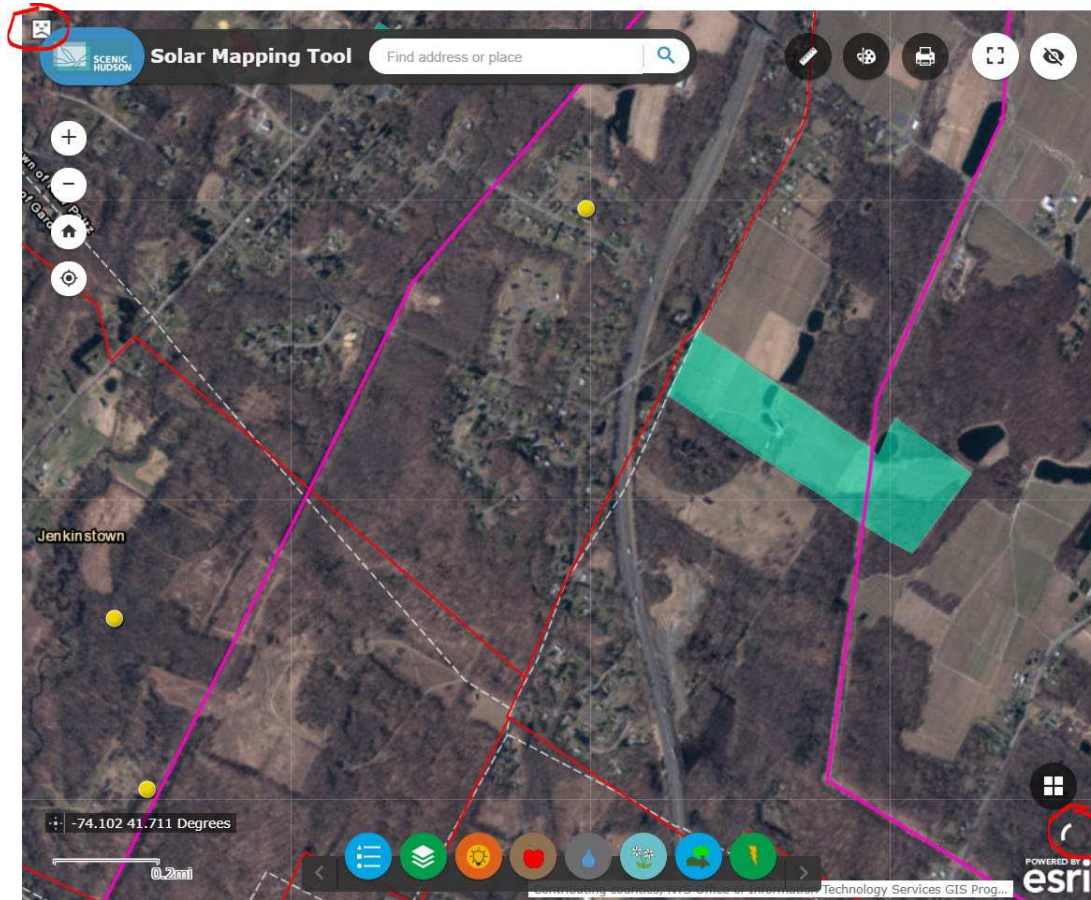


Above: Improperly loaded map – no control buttons are showing.



Above: Properly loaded map, with splash screen and buttons visible.

Q: I turned on a data layer but it seems like it's not loading?



A: Some layers are only visible when zoomed in or out to a certain extent. For example, land cover data are only appropriate when zoomed out, whereas tax parcels are only useful when zoomed in. Layer names will appear in gray in the Layer Group box if they are not visible at the current zoom level (if visible, they will be black).

Some of the data layers have a lot of data and may take a couple minutes to load. A spinning circle icon in the *lower right* corner of the screen (circled in red above) indicates the layer is trying to load. The Solar Mapping Tool may perform slowly on slower internet connections, or if too many layers are turned on simultaneously.

If, after a couple minutes, a layer still doesn't load, it may not be loading properly, indicated by the frowning face icon in the *upper left* corner (circled in red above). If the frowning face appears, try refreshing the entire Solar Mapping Tool in your browser (you will lose your current layer settings and zoom extent). If refreshing your browser doesn't work, it may indicate an occasional temporary issue with the map servers. These issues are usually resolved within an hour or so. Using fewer layers at a time will improve Tool performance.

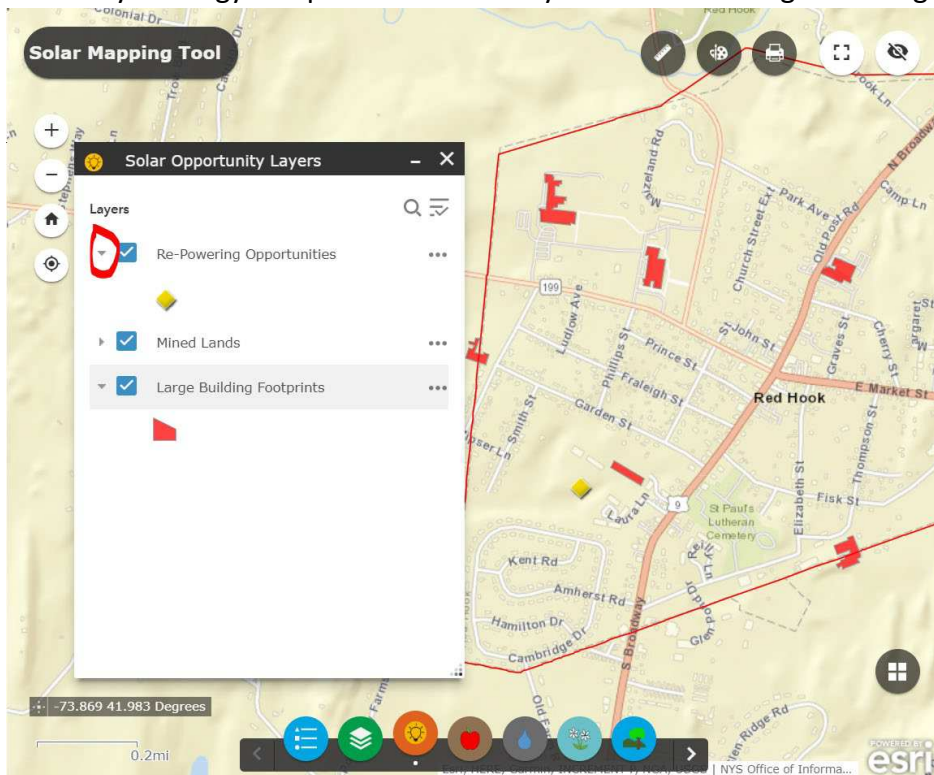
Q: Where can I find a key for what the symbology (different colors or symbols on the map) means?

A: There are two ways to do this:

1. The Legend button is to the left of the Layer Group buttons at the bottom of the screen (you may have to click the left arrow on the Layer Groups Bar to see it). Clicking the Legend button will open a Legend that shows the symbology for all the layers currently turned on. You may need to scroll within the Legend to see all active layer symbology.



2. Within each Layer Group window, next to the checkboxes to turn layers on and off, are arrows that show (arrow pointing down) or hide (arrow pointing right) symbology for that layer. The arrow for the Re-Powering Opportunities Layer is circled below. The symbology is expanded for that layer and for the Large Building Footprints layer.

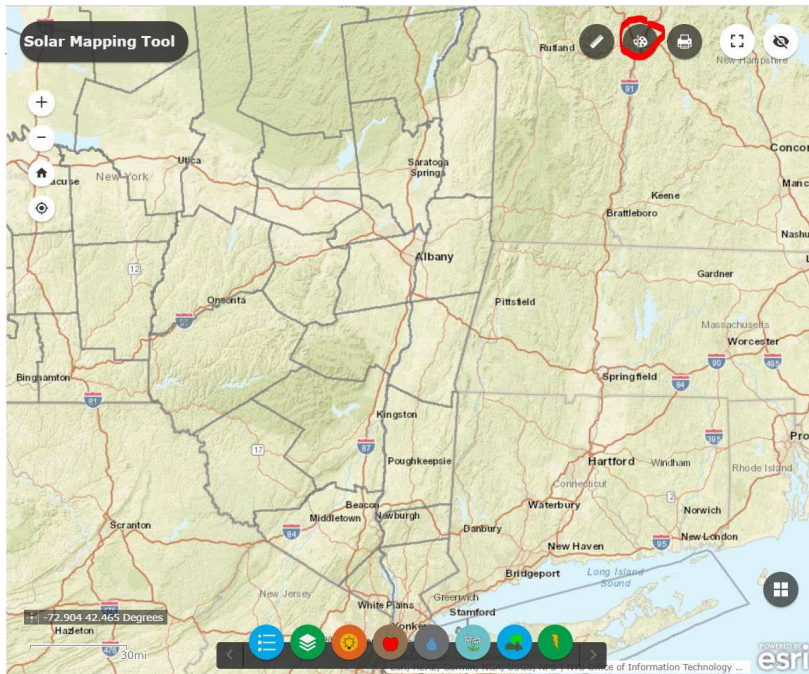


[\(Return to list of questions\)](#)

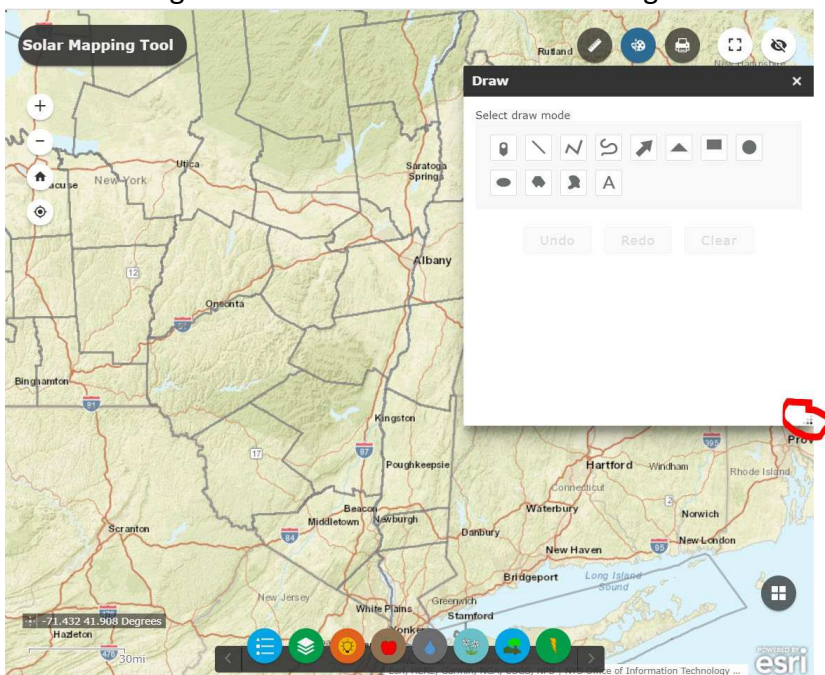
Q: How do I use the Draw Tool in Part IV?

A: Follow these instructions to use the Draw Tool in Part IV:

1. Access the Draw Tool by clicking on the icon circled in red below on the map.

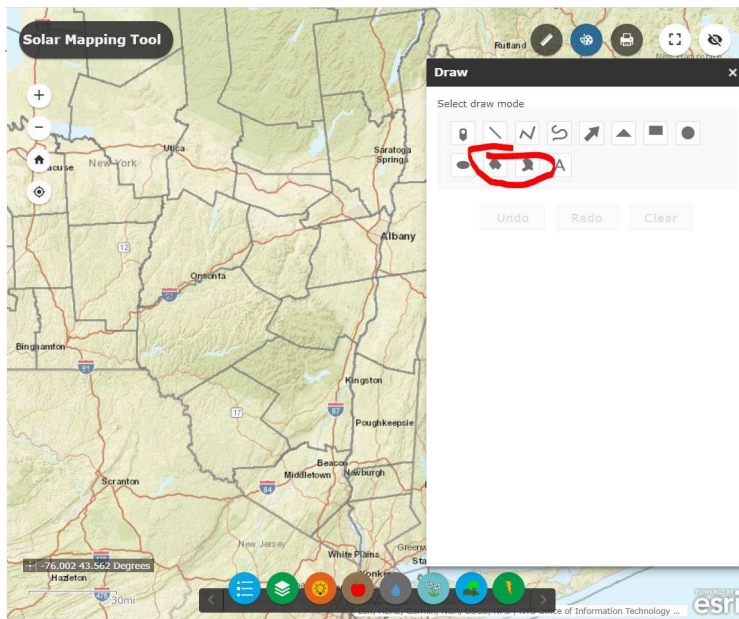


2. Once it pops up, resizing the Draw box makes it easier to use the function. Hover your mouse over the lower right corner of the box so the cursor changes to an arrow, then click and drag the box corner down to make it larger.

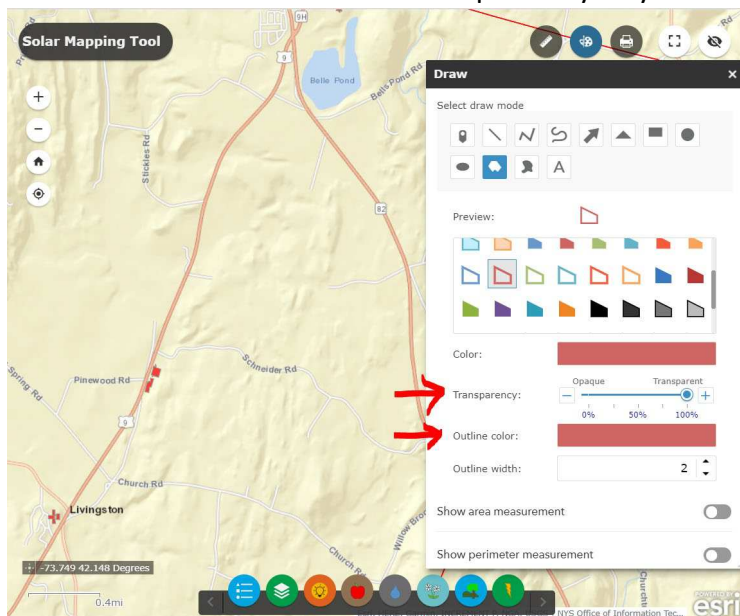


[\(Return to list of questions\)](#)

- Point markers, lines, or text may be useful to put on a map, but the most useful for outlining a potential solar location are the Polygon and Freehand Polygon shapes, circled below.

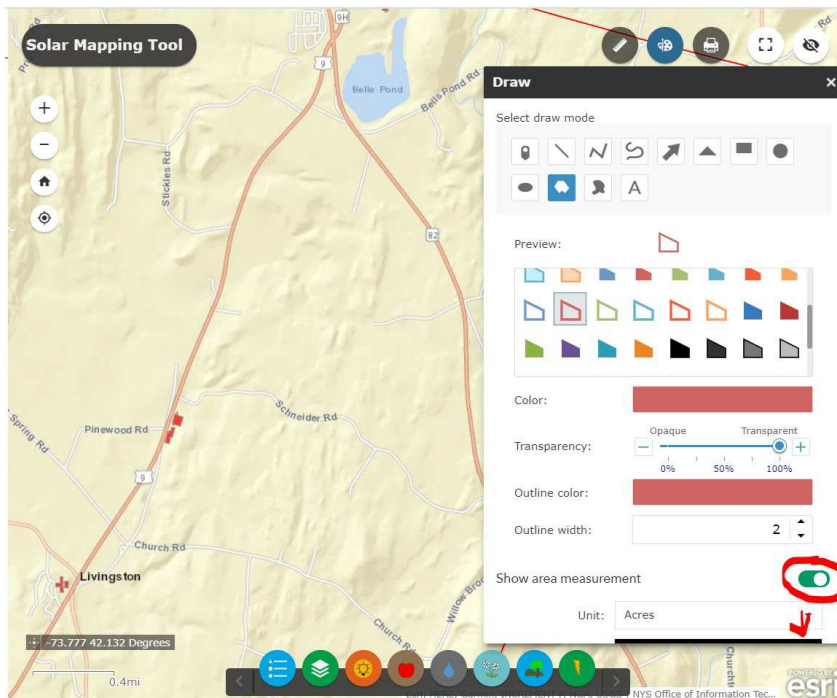


- Select one of the shapes to draw. Options for the shape appear in the Draw box. Often a color scheme with either 50% or 100% transparency is most helpful. To get just an outline with no fill, select a color scheme will 100% transparency. Select an outline color that will stand out from the basemap and layers you have showing on the map.

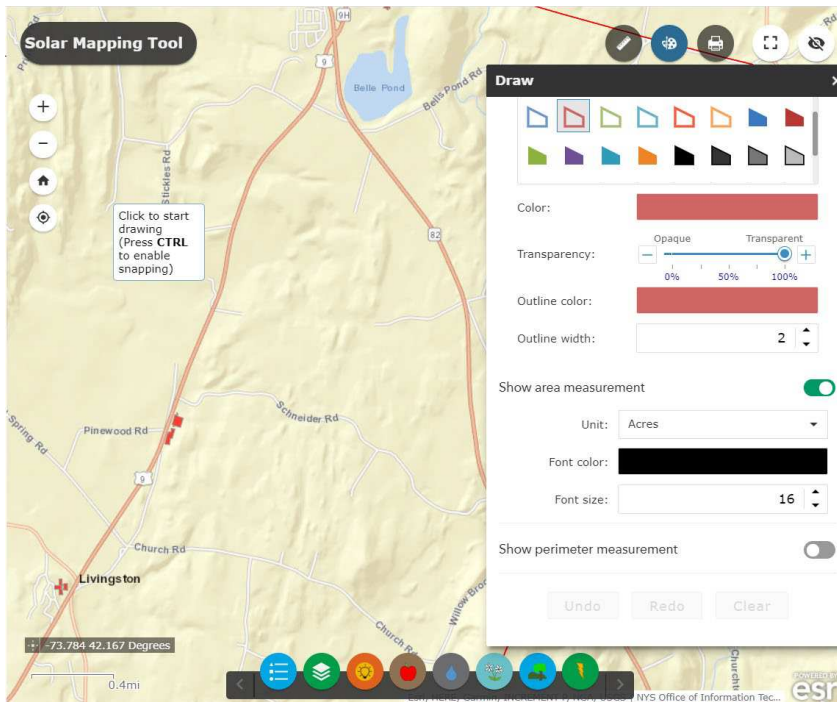


[\(Return to list of questions\)](#)

5. Toggling on the Show Area Measurement switch enables options for displaying the acreage of the space you outline. The switch will be green when turned on, as circled below in red. You may need to scroll down within the Draw box to see all options.

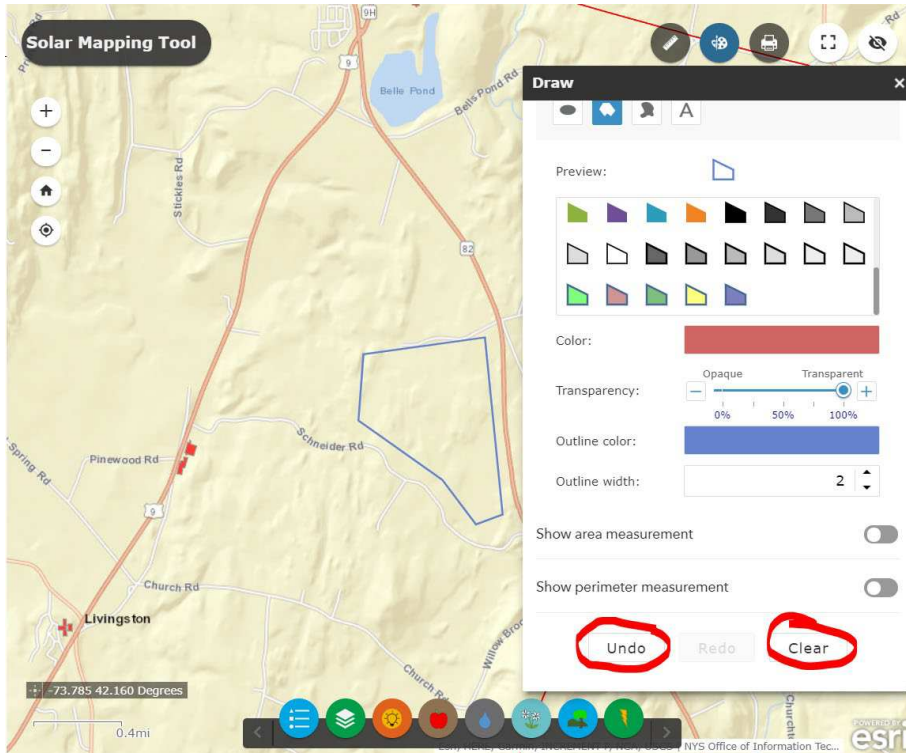


After scrolling down within the Draw box:



[\(Return to list of questions\)](#)

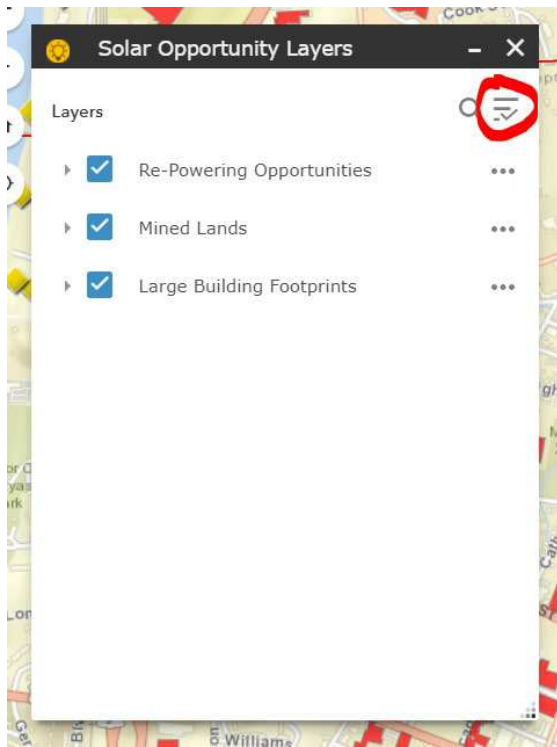
6. When drawing a Polygon, click points on the map to make each vertex (corner) of the polygon, and finish the drawing by double-clicking on the last vertex point you create. Holding down the control key (Windows) or command key (Mac) will “snap” your cursor to features on the map.
When drawing a Freehand Polygon, click and hold the mouse and drag your cursor around the screen to create the shape, letting go of the mouse button to stop drawing.
7. You can use the Undo, Redo, and Clear buttons at the bottom of the Draw box to erase existing shapes and start over, or remove the most recently drawn shape.



[\(Return to list of questions\)](#)

Q: How can I turn all the layers on or off at once?

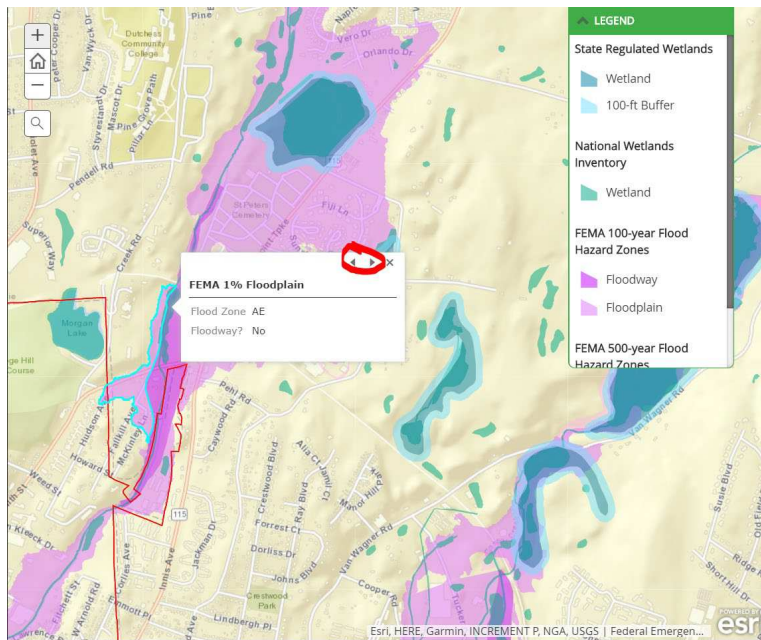
A: You can turn all the layers in a Layer Group on or off at once, as well as expanding or collapsing all layers, using the menu button within each Layer Group, circled below in red.



[\(Return to list of questions\)](#)

Q: How do I view the pop-up for one layer instead of another when multiple layers are turned on?

A: When multiple layers are turned on, you can flip through pop-up information for each layer using the triangles in the upper right of the pop up, circled below in red. The pop-ups look slightly different in Part III (immediately below) and Part IV (second image below).



Pop-ups in Part III (above) and Part IV (below), with arrows circled for flipping among different layers' pop-up information.

