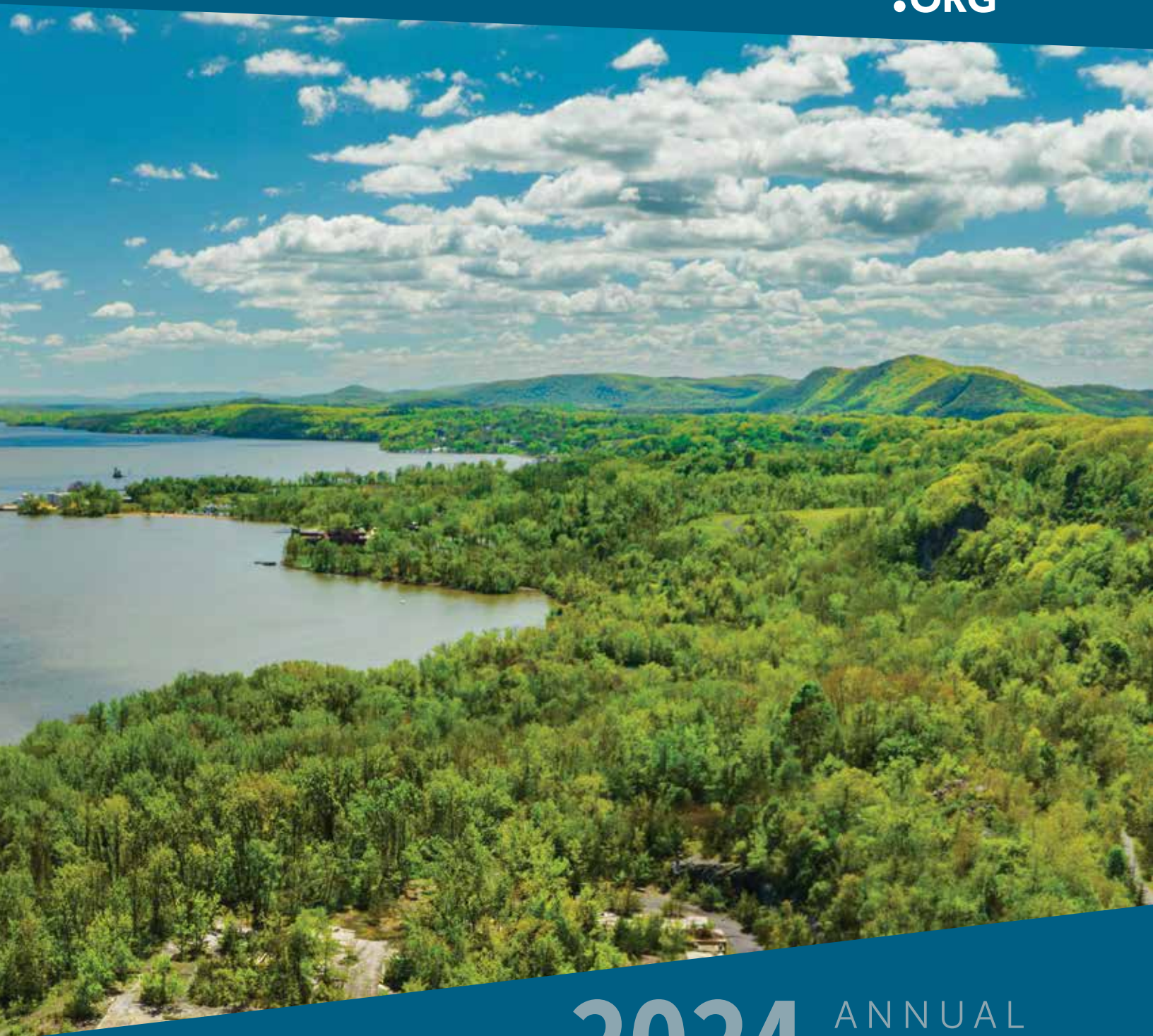




SCENIC  
HUDSON  
.ORG



2024 ANNUAL  
REPORT





# SCENIC HUDSON: POSITIVE ENERGY, LASTING RESULTS

In a period of great transition, Scenic Hudson continues to be a bright light and powerful force for making good things happen across the region. The energy we bring to the whole spectrum of our work — creating new parks, protecting the valley's beautiful places, conserving biodiversity, and fighting for environmental health — remains unmatched.

Day in and day out, our outstanding staff is tackling the hard work and ensuring a better future for all of us who call the Hudson Valley home. Working alongside you, we're creating more opportunities to love, protect, and connect with the people and places we cherish. We're pleased to offer this update to celebrate the positive impact we've had over the past year while also taking a look at what lies ahead.

Scenic Hudson's track record stretches over 60 years: We've protected 53,000 acres of vital land, conserved 146 family farms, and created or enhanced 65 places to connect with nature. We're fighting climate change and working toward securing environmental justice for all.

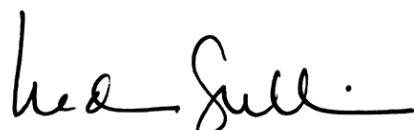
Adding to our record of significant accomplishments, this year Scenic Hudson:

- **Conserved more than 1,500 acres**, including an iconic mountain, ecologically important wetlands and forests, and family farms that supply fresh, healthy produce to the region and New York City.
- **Defeated the Danskammer fracked-gas power plant**, a key battle in the fight against climate change in New York State and a national precedent that is helping to turn the tide from fossil fuels to renewable energy.
- Forged and gained passage of legislation that will help communities find **win-win solutions in siting renewable energy projects**.
- Brought national attention to our **fight to secure a comprehensive cleanup of toxic Hudson River pollution**.
- **Supported urban farming and enhanced life in the River Cities** of Kingston, Newburgh, and Poughkeepsie with family-friendly events and ways for people to connect with nature in their own neighborhoods.
- **Helped farmers adapt to the challenges of climate change** by providing technical assistance and education on regenerative agriculture.
- **Developed new trails** and promoted new places to access the river up and down the valley.

Partners are key to our success. From volunteers to land owners, fellow land trusts to elected officials, we marvel at the commitment and generosity of so many — including you — who help make these accomplishments possible, month after month, year after year.

With your enduring support, Scenic Hudson will continue to advance our mission to sustain and enhance the valley's inspirational beauty and health for generations to come.

Onward!

  
President

  
Board Chair



# PROTECTING AND NURTURING LAND THAT SUPPORTS LIFE



Land. It's fundamental to our lives. Walk out your front door and every step you take, every view you enjoy, and even the food that nourishes you, starts with the land. For more than six decades, Scenic Hudson has been a leader in forging innovative conservation strategies that protect the irreplaceable lands we — and future generations — rely on. Our initiatives benefit the region's scenic beauty, wildlife, farming, and climate resilience while **ensuring all people can connect to the Hudson Valley's iconic places and nature in their own neighborhoods.**

This year, we protected another 45 acres that preserve the views from Olana, the home of famed Hudson River painter Frederic Church, a state historic site. This parcel in the town of Greenport **adds a key piece to more than 2,100 acres of expansive scenery that we've protected**, capturing the heart of American landscape painting. In Ulster County, we also conserved 66 acres along the Black Creek (right), bolstering more than 700 acres of protected land in this important biodiversity corridor. Not only will this land offer major recreational opportunities as part of the future multimodal John Burroughs Black Creek Trail, but clear views from the FDR site directly across the Hudson will continue to inspire generations of residents and visitors. These examples highlight how our land protection work carries multiple benefits for the region's scenic beauty, habitats, recreation, tourism, and cultural legacy.

We also partnered with the Kingston Land Trust (KLT) to purchase 54 acres straddling the City of Kingston and the Town of Ulster. The newly protected urban farm will be used as a dynamic hub for KLT's Land in Black Hands initiative, which will offer education and housing for farmers while addressing the long legacy of discrimination against BIPOC (Black, Indigenous and People of Color) farmers in this country. An innovative partnership with the Orange County Land Trust (OCLT) **helped save 322 acres on iconic Sugar Loaf Mountain in Chester.** Now, for the first time, outdoor enthusiasts will be able to access the summit as well as connect to the state park next door. Another dynamic collaboration with OCLT and the United States Department of Agriculture (USDA) resulted in saving the 57-acre Wagon Wheel Farm (above) in nearby Goshen. This longtime family farm transitioned from dairy to sustainably grown vegetables, hay, and eggs that are sold at a popular farmstand and local farmers markets. It is a critical link in our Foodshed Conservation Plan, which is heavily focused on saving the region's rich farmland to meet the rising demand for fresh local food in the Hudson Valley and New York City.









Many of these land saves were accomplished through our Climate and Environmental Justice grants. Created in 2022, these funds are being used to accelerate the pace of land protection across the region. Our assistance allowed the Mohawk Hudson Land Conservancy (MHLC) to purchase 227 acres that will **expand the Bozen Kill Preserve in Albany County to nearly 700 acres of critical forest and wetlands**, providing clean water, recreation, and habitat for many birds, plants, and animals. By working with the Rensselaer Plateau Alliance (RPA), we saved another 91 acres of ecologically important land, and with our help, the Wallkill Valley Land Trust (WVLT) **permanently protected a scenic 326-acre farm** with vital forests in southern Ulster County.

Scenic Hudson is collaborating with partners to use land conservation as a way to create vibrant communities that include affordable housing. In a first-of-its-kind partnership with Rural Ulster Preservation Company (RUPCO), a nonprofit focused on housing, and other partners, we conserved 173 acres of farmland in Red Hook. This groundbreaking project sets aside 12 acres (above) to build 40 energy-efficient homes, with half of them slated to be affordable one- and two-bedroom rental apartments. The repurposing of an existing barn will generate jobs, while the remaining farmland has been leased to young farmers dedicated to organic practices.

**600 trees is a lot of trees! That's how many we planted this year** (right) as part of our restoration efforts at Mawignack Preserve in Catskill. We're working to reestablish a rare floodplain forest along the Catskill Creek that will help protect downstream homes and businesses from devastating flooding while providing valuable habitat. Nearby in Ulster County, we initiated an ecological and hydrological study along a Black Creek tributary to protect endangered northern cricket frog (below) habitat while working to reduce flooding and promoting resilience to climate change on two upstream farms.







## 2025 GOALS

- Conserve 1,500 acres of high-priority lands that advance climate resiliency, biodiversity and landscape connectivity, and advance federal and state commitments to conserve 30% of open land by 2030
- Promote forest regeneration that is critical to the resiliency of the region and promotes the objectives of the NYS Climate Leadership and Community Protection Act (CLCPA), including continued restoration of the floodplain forest at Mawignack Preserve
- Advance opportunities for conserving land in collaboration with affordable housing partners



# FOSTERING COMMUNITY CONNECTIONS THAT CONNECT PEOPLE WITH EACH OTHER + NATURE



Building on our track record of protecting and connecting communities to their natural treasures, Scenic Hudson is working with residents to unlock public access with **a new preserve in Highland Falls, Orange County (right)**. Despite living right next to the Hudson, villagers haven't had a local outdoor spot to enjoy a nature walk or view the river. That will soon change: We are working with the local community to design and build a gateway and trail system on 31 acres we conserved overlooking the river. Plans also protect sensitive ecological and historical resources. Valley wide, our comprehensive Hudson River Access Plan is now the go-to resource for identifying current and potential future places to get on the river. We brought together community leaders, state officials, and excited residents to share the spots they already love to fish, boat, and walk along the river — as well as their dreams for more riverfront connection.

We also helped secure federal funding to advance the Westchester RiverWalk Connection in Tarrytown. When completed, **this small trail — just 0.6 miles under the Governor Mario M. Cuomo Bridge — will have a big impact on creating bicycle and pedestrian access between several regional trails, train stations, and important local historic sites.**

In our River Cities — Poughkeepsie, Newburgh, and Kingston — we collaborate with community partners to improve and celebrate vibrant public spaces that connect people with the outdoors and promote well-being. We're working to close the "nature gap" that deprives people in urban areas from the benefits of green, natural spaces. The "Let's Bike Hudson Valley" series, held in all three cities this spring, gave families a chance to explore their neighborhoods on two wheels and experience a healthy, car-free way to get around. Free, refurbished bikes, helmets, and bike repair lessons were provided by a partner.

**Opening up public access to the Fall Kill Creek**, an important Hudson tributary on Poughkeepsie's Northside, is getting closer to reality. This year, the city received a \$765,500 state grant to advance the "Fall Kill Blueway Waterfront Design Guidelines." Waterfront planning along the largely hidden creek will create sorely needed outdoor places for families to connect with nature, boost biodiversity, and address flooding with nature-based solutions. Access to waterways in all the River Cities offers a variety of physical and mental health benefits. We also supported partner organizations in tangible ways. We cohosted a fishing derby and a "Coping and Casting" event, both at Sojourner Truth State Park in Kingston, as well as multiple community science days along the Fall Kill.









Access to the Fall Kill will eventually be enhanced by the small, creekside property we bought directly across from the Northside Hub at 58 Parker Avenue, where we are **turning a contaminated factory into sustainable, carbon-neutral staff offices, as well as a community gathering space**. Just down the street from Walkway Over the Hudson State Park, the hub (above), which is on track to be completed in 2025, will play a pivotal role in creating a regional network of interconnected trails and gathering spots.

Our second annual Creek Fest in Newburgh this summer (right) was a joyful gathering honoring another mostly unseen urban tributary, the Quassaick Creek, a portion of which stretches from the Hudson River to the foot of Snake Hill (below), a striking local viewpoint protected by Scenic Hudson. Guests fanned out to several different spots along the waterway, where they hiked, kayaked, ate free food, learned about nature, danced to music — and gave meaningful feedback about improving public access along the creek. This will inform our work as we complete the Master Plan for the Quassaick Creek Greenway.







## 2025 GOALS

- Advance regional trail links, including the Illinois Mountain Connector Trail at the John Burroughs Black Creek Trail, as well as the environmental review and design of the Westchester RiverWalk Connection in Tarrytown
- Continue community engagement on greenways and blueways in our River Cities, and commence design for five public sites along the Fall Kill Blueway



# PROMOTING RESPONSIBLE RENEWABLE ENERGY DEVELOPMENT

Talk about a success story! In June, when Danskammer Energy finally **withdrew its application to construct a polluting fracked-gas power plant** in Newburgh, local residents, environmental justice communities and officials at every level of state government — and across the nation — celebrated. Scenic Hudson played a leadership role in the Stop Danskammer Coalition for more than five years, fueling grassroots activists and intervening in the regulatory review of the proposed project. The plant's defeat established the power of Governor Hochul enforcing the NYS Climate Leadership and Community Protection Act (CLCPA) as a legal and regulatory tool in battling new fossil fuel infrastructure. It marks **a turning point in the transition to renewable energy** and affirms New York State's — and Scenic Hudson's — national leadership in meeting the ambitious climate goals laid out in the CLCPA.

When Governor Hochul signed the SITED (Smart Integrative Tools for Energy Development) Act into law this year, **communities throughout the state were given the tools — and the power — to determine where renewable projects like solar or wind could be located.** (Right: Agrivoltaics, the practice of integrating solar energy and farming in the same location, is already being used in parts of the country.) This resulted in New York instantly becoming a national leader in climate change solutions. According to New York State Assemblymember Didi Barrett, the law's signature mapping tool was directly inspired by Scenic Hudson's own solar mapping tool — part of our larger "How to Solar Now" Toolkit. "It was definitely an inspiration for doing it statewide," she said. "Scenic Hudson has been a partner on this legislation, as they have with other bills over the years." While our solar tools continue to be used throughout the region, our solar expertise is now attracting national attention. This year, in conjunction with the Land Trust Alliance, two staff members were selected to join solar working groups at Stanford University's Woods Institute for the Environment. We are now well positioned to help develop renewable energy resources throughout the Hudson Valley.







## 2025 GOALS

- Strengthen community partnerships with the state in siting renewable energy infrastructure
- Accelerate carbon sequestration on farms and in forests, and advance renewables to reach state climate laws
- Install solar panels at Scenic Hudson parks



# ADVANCING CLIMATE SMART AGRICULTURE AT MULTIPLE LEVELS

Scenic Hudson is dedicated to helping farmers in our region to meaningfully adapt to the effects of climate change and strengthen the adoption of sustainable practices while promoting farm economic viability. We have successfully created two new Regenerative Agriculture Demonstration Areas (RADAs) — in Ulster and Columbia counties — where we **work hand in hand with farmers to deploy critical regenerative practices** that enhance the soil and combat climate change. Take the 117-acre SunSpirit hay farm in the Rondout Valley RADA in Ulster County. We partnered with USDA, which provided half of the financing, to close on an easement that protects water quality and enhances climate resilience. Owned by a first-generation farmer, the property (below) is now guaranteed to remain affordable for future generations of farmers. Scenic Hudson also matched a USDA grant for an innovative multipurpose riparian planting to protect a significant local tributary. In the Columbia County RADA, we worked with Sky High Farm to install fencing that will allow for intentional grazing and increased regenerative agriculture practices.

At a field day last spring in Columbia County (right), cosponsored by Cornell University and Glynwood Center for Regional Food and Farming, we provided dozens of farmers information on **how to best use biochar**, the charcoal-like substance that is made from organic waste, including manure and dead trees. The “black gold” is creating a buzz in the sustainable farming field with its ability to capture greenhouse gas emissions while enhancing soil health. Our instructional and networking sessions extended to an agroforestry field day as well as a webinar series on regenerative practices. This year, two Scenic Hudson staff members received advanced training in soil health with the American Farmland Trust. This education will allow us to continue our leadership role in connecting farmers to one another and providing them with technical assistance that benefits them — and the planet.







## 2025 GOALS

- Support farmers by connecting them to each other, purchasing conservation easements, and providing technical assistance to support the shift to regenerative practices



# RESHAPING THE POLICY LANDSCAPE



Scenic Hudson's advocacy resulted in state policies that continued record funding levels first established in the 2022 NYS budget — particularly for regenerative agriculture and natural climate solutions. The 2024 budget maintained a \$400 million Environmental Protection Fund, approved \$17.25 million to enhance the state's Soil and Water Conservation Districts, and earmarked \$15.25 million for climate-resilient farms, a nearly \$11 million increase from pre-2022 levels. This year, our legacy campaign to clean the Hudson River of toxic polychlorinated biphenyls (PCBs) pollution attracted the attention of officials at the highest levels of state and national government. In February, Scenic Hudson stood side by side with Senator Kirsten Gillibrand and our Friends of a Clean Hudson coalition members at a press conference (above) where she **called on the U.S. Environmental Protection Agency (EPA) to take action on cleaning up the river.** At another press event, we supported Senator Pete Harkham and the New York State Black, Puerto Rican, Hispanic & Asian Legislative Caucus (BPHA) as they, too, urged the EPA to do the right thing. We continue to "lead with the science" and in conjunction with our partners are using multiple channels to increase awareness of the ongoing dangers of PCBs. We won't stop fighting for justice for the overburdened communities who rely on the river's fish to feed their families.

In 2019, Scenic Hudson founded the Northeast Carbon Alliance (NECA) to bring together farmers, scientists, and policymakers to spur natural climate solutions. In light of the stalemates and political division in Congress, we're evolving our work to focus on the state and local levels, where real change is happening. Still, we increased our presence in Washington, D.C., this year to ensure the federal Farm Bill, which expired in September 2023, invests in climate-friendly operations and meets the many pressing needs of Northeast farmers. We're pushing the government to provide critical supports for existing farms while helping usher in the next generation of farmers. As part of this effort, we are drawing attention to the economic realities of small farmers as well as **expanding funding eligibility for urban farms and community gardens.**





## 2025 GOALS

- Advance legislation that supports investment of state dollars to conserve land and create new parks and trails
- Advocate for federal laws and resources supporting regenerative agriculture and farm economic viability in rural and urban areas
- Continue to hold the EPA accountable for ordering a comprehensive PCB cleanup of the Hudson River
- Work to ensure the Hudson is not a parking lot for oil tankers and barges



# ENGAGING COMMUNITIES THROUGH PUBLIC SPACES THAT ARE INCLUSIVE, SAFE + ACCESSIBLE



Scenic Hudson began phase one of a major improvement and expansion project at Black Creek Preserve in Ulster County (above). The new amenities – including an expanded parking lot with ADA-compliant spaces, a trailhead kiosk, and a riverfront pavilion – will make the popular park more accessible. **Bilingual informational signs in Spanish and English are being installed at the park** and will eventually serve as a model for many of our 45+ other parks. Working in conjunction with the NYS Office of Parks, Recreation and Historic Preservation (OPRHP) and the Palisades Interstate Park Commission (PIPC), we also completed emergency stabilization of the historic mule barn at Sojourner Truth State Park, once home to the mules that carted bricks for the early 1900's-era Brigham Brickyard. A floating swim structure in the lake is one of many upcoming improvements slated for the park.

Poughkeepsie's Northside neighborhood came together last fall to dance, eat, play, laugh, and learn at the third-annual Harvest Fest at the Pershing Ave. Park & Neighborhood Farm. Our previous collaboration with partners **revitalized this long-neglected park** and established the first city-owned urban farm. There's a lot to celebrate: This year, we hired a new urban farmer and assistant grower (right) who added a drip irrigation system, switched up the mulch cover, and produced 1,000 lbs of produce — that's twice as much as last year! It was all given to people in the neighborhood, free of charge, at the weekly farm stand.









We're improving our parks to be safe, accessible, and able to withstand the effects of climate change with shade structures, trails, a pavilion, and solar panels. This year, we added new benches and safety features at Beacon Point in Long Dock Park (above) and installed bilingual signs to inform people of free water-refill stations for patrons and pets. We continue to increase our use of battery-operated tools for park maintenance in order to reduce emissions. This remains a community effort; we invited our legion of loyal volunteers at West Point Foundry Preserve in Cold Spring to come and battle invasive species (below). On one day in March, they cleared more than 6,000 square feet of barberry, multiflora rose, garlic mustard, and more from along Foundry Cove!

Our inclusive, climate-friendly parks continue to win national awards. Recently, the American Society of Landscape Architects gave us and our landscape design consultant, OLIN, an "Honor Award for Analysis and Planning" for Sojourner Truth State Park (right). The judges noted: "It provides a real-world model for ecological recovery and sustainable park design that serves diverse community needs, **enhancing local economies and contributing to the well-being of the public.**"







## 2025 GOALS

- Complete enhancements of Scenic Hudson parks that connect people to the river, including a significant expansion of Black Creek Preserve and resilient infrastructure improvements at Esopus Meadows Preserve
- Collaborate with NYS OPRHP and PIPC on using the \$70 million state investment to add a swimming structure and improve trail and river access at Kingston's Sojourner Truth State Park
- Broaden our volunteer program to have a greater impact in more parks





Scenic Hudson's total consolidated operating and capital budget during the year was \$19 million and included three components: the Scenic Hudson operating budget and The Scenic Hudson Land Trust operating and capital budgets.

### **Scenic Hudson**

Scenic Hudson's operating budget for FY24 – \$10.8 million – supported efforts to enhance the benefits valley residents and visitors receive from our work protecting land, creating parks, and halting threats to the region's natural beauty. The funds enabled Scenic Hudson to preserve world-class vistas, irreplaceable wildlife habitat, and family farms supplying healthy food; partner with communities and others to provide beautiful new places for people to exercise and explore nature; and mobilize citizens to join our campaigns to make the Hudson River cleaner, safer, and more accessible.

### **The Scenic Hudson Land Trust**

The land trust spent \$2.5 million in capital to secure conservation easements on farms and acquire ecologically important lands along the Hudson River that will provide outstanding new recreational opportunities for people who live, work, and play in the region. The land trust spent \$5.7 million on the following: creating, maintaining, and improving our parks; staff costs in monitoring conservation easements; and working with partners to implement the Foodshed Conservation Plan and Hudson Valley Conservation Strategy. On average, for every dollar of Scenic Hudson capital, we leverage nearly two dollars of private or governmental funds.

### **Financial Structure**

Scenic Hudson maintains four endowments: The Lila Acheson and DeWitt Wallace Hudson Valley Land Preservation Endowment (\$193 million at year-end FY24), used to support land conservation activities; a Board-Designated Fund for general operating expenses (\$34.6 million at year-end FY24); the Kathryn W. Davis Fund for Park Planning and Community Land Use (\$5.2 million at year-end FY24); and an Easement Enforcement Fund (\$1 million at year-end FY24). The assets are pooled in a diversified portfolio supervised by an investment committee. Total investment return was 11.3 percent for FY24. The board approved \$10.5 million in spending from the endowments for the year (5 percent of the past 12 quarters' rolling average value).

Although lands owned by the land trust are eligible for tax exemption, the land trust paid \$146,000 in property taxes and payments in lieu of taxes in FY24. In FY23, the land trust made \$194,000 of such payments. The land trust seeks relief from taxes at the first opportunity following acquisition of the property.

The Audit Committee engages CBIZ & Mayer Hoffman McCann CPAs to perform an independent annual audit.



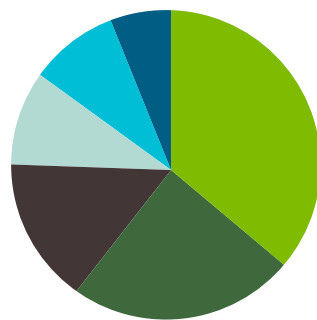


## Consolidated Statement of Financial Position

	June 30, 2023	June 30, 2024**
Land areas (at cost)	64,601	65,598
Cash and investments	262,319	268,946
Other assets	15,378	32,698
Total assets	342,298	367,242
Liabilities	7,842	4,997
Net assets	334,456	362,245
Total liabilities and net assets	342,298	367,242

Excludes HHFT (\$ = 000's) \*\*Under audit as of Annual Report issuance

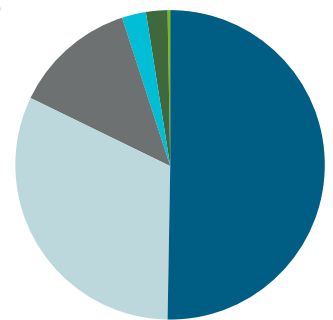
## Consolidated Operating Expenses



Science, Parks & Community Engagement (incl. River Cities)	36.2%
Land Conservation*	24.5%
Administration	14.9%
Fundraising	9.6%
Policy, Advocacy & Outreach	8.9%
Communications	5.9%

## Consolidated Operating Revenues

Investment Allocations for Spending**	50.1%
Individuals	31.6%
Foundations	12.9%
Government***	2.4%
Other Sources	2.3%
Corporations	0.6%



\* Including conservation easements. \*\* The vast majority of investment allocation for spending supports land acquisition and parks creation.

\*\*\* The majority of revenues from government provide capital for farmland and open space preservation and parks.

The financial statements of Scenic Hudson, Inc., and its two supporting organizations — The Scenic Hudson Land Trust, Inc., and Hudson Highlands Fjord Trail, Inc. — are consolidated for audit purposes. However, the financial statements for Hudson Highlands Fjord Trail, Inc., are excluded from this report as it operates as an independent subsidiary of Scenic Hudson. To learn more about Hudson Highlands Fjord Trail, Inc., and its plans to develop a linear park spanning 7.5 walkable, bikeable, and accessible miles between the Village of Cold Spring and City of Beacon, visit [www.hhft.org](http://www.hhft.org).



## Hudson River Stewardship Society

Individuals who have included Scenic Hudson in their estate or long-term financial plans

Anonymous (13)  
Barry A. Benepe  
Benson Blake, Jr.  
Patricia Carroll-Mathes  
Joseph Chapman, Jr.  
Christopher Davis  
Mr. and Mrs. Irvine D. Flinn  
Aimee J. Frank  
Mrs. Herbert E. Gade  
Kristin Gamble  
Anna Carlson Gannett  
Monique Gershon  
Joan C. Gilson  
William Lockridge Harris  
Marjorie and Gurnee Hart  
Dr. Peter Hofmann and William J. Burback  
Leon T. Hopewell  
Joyce L. Hunt  
Margaret Innerhofer  
Harry A. Jacobs, Jr.  
Howard Kaplowitz  
Joseph Kazlauskas  
Father Thomas Kiely  
Margaret A. King  
Linda M. Kleinhenz  
Mr. and Mrs. Frank Martucci  
Marian McEvoy  
W. Patrick McMullan  
Brenda Melstein  
Ken and Lindsay Morgan  
David H. Mortimer  
Barbara A. Murphy  
Frank Murphy  
Will Nixon  
Frederick Osborn III  
Elizabeth B. Pugh  
David N. Redden  
Frederic C. Rich  
Richard D. Rockwell  
Leigh Seippel  
Anne-Katrin Spiess  
John H. Steinberg  
Ned and Tara Sullivan  
Mr. and Mrs. Steve Varvaro  
Dawn Watson  
John C. Weeks  
Henry H. Westmoreland  
Heather Whitefield and Catherine Baer  
Edward B. Whitney and Martha Howell  
Wheelock Whitney III  
Anton F. Wilson  
Alexander E. Zagoreos

## 2024 Contributors

Individuals who made gifts between July 1, 2023, and June 30, 2024

### Gifts of \$500,000 and above

Anonymous (2)\*  
Bernard & Anne Spitzer Charitable Trust, Inc.\*  
Andrea and Eric Colombel\*  
James and Susan Goodfellow\*  
Marjorie and Gurnee Hart  
Dr. Peter Hofmann and William J. Burback\*  
The Krupp Foundation/  
Richard and Natasha Krupp\*  
The Peter and Carmen Lucia Buck Foundation  
Red Crane Foundation\*  
Shelby Cullom Davis Charitable Fund/  
Christopher C. Davis\*  
Jon Stryker and Slobodan Randjelovic\*

### Gifts of \$100,000-\$499,999

Anonymous (2)\*  
1772 Foundation\*  
Anna-Maria and Stephen Kellen Foundation  
AVR Realty Company\*  
Elyse Arnow Brill and Joshua Arnow\*  
Christopher Buck and Hara Schwartz  
Rebecca and Jared Cohen  
Constance Curran\*  
Amy Goldman Fowler  
Kristin Gamble  
Jane W. Nuhn Charitable Trust\*  
Richard H. Klapper and Helena Lee\*  
Judah and Michele Kraushaar\*  
Land Trust Alliance\*  
Lozen Foundation\*  
LSR Fund\*  
The New York Community Trust\*  
Will Nixon\*  
NoVo Foundation\*  
The Peckham Family Foundation  
Alexander S. Reese and Alison Spear  
Richard and Heidi Rieger\*  
Lucy R. Waletzky, M.D.  
Wheelock Whitney and Sandro Cagnin

### Gifts of \$50,000-\$99,999

The G. Unger Vetlesen Foundation  
Andrew Gelb and Melissa Scott\*  
Harney & Sons Fine Teas  
The J. M. Kaplan Fund, Inc.  
Tatiana Kaletsch\*  
Chip Loewenson and Susan Brune  
William and Mary Lunt\*  
David H. Mortimer/  
Mary W. Harriman Foundation  
Jonathan Rose/Jonathan & Diana Rose  
Lostand Foundation\*  
Tortuga Charitable Foundation

### Gifts of \$25,000-\$49,999

Anonymous  
Helen and Ted Buerger  
Sally and Stephen M. Clement, III/  
Corliss Foundation  
Community Foundations of the  
Hudson Valley  
Michael DuPree and Michael Fleischer  
Richard and Abby Elbaum  
Cybele Fishman and Jay Rao  
Anne Hubbard  
Hudson River Valley Greenway Conservancy  
Estate of Lucinda Hunt  
Charles Kerr and Heather Thomas  
Daniel J. Kramer and Judith Mogul  
Douglas Land and Victoria Peebles/The Land  
Family Foundation  
Robert C. Lieber and Pepper Evans  
Susan Livingston  
Lawrence Lunt/Armonia\*  
Marshall & Sterling, Inc.  
W. Patrick McMullan and Rachel McPherson  
Glenn and Alina Pacchiana/  
Thalle Industries, Inc.  
Gil and Emily Raviv  
Jennifer and David Rimmer/Daniel J. and  
Edith A. Ehrlich Family Foundation  
Abby A. Rockefeller and Lee Halprin  
John Saunders and Elizabeth Nevins-Saunders  
Leigh Seippel  
J.E. Hoke and Laurie Slaughter  
Mr. and Mrs. Maarten van Hengel

Illiana van Meeteren and Terence Boylan  
Suzy Welch  
Edward B. Whitney and Martha Howell  
Julia N. Widdowson and Nigel Widdowson  
The William and Mary Greve Foundation, Inc.

### Gifts of \$10,000-\$24,999

Anonymous (2)  
American Farmland Trust\*  
Kelly and Vishal Bakshi  
Jack Bankowsky and Matthew Marks  
Paul Cassidy and Vernon Evenson  
Consigli Construction  
Davada Family Foundation  
Michael P. Dowling/The Dowling Foundation  
Ingrid and Stephen Dyott  
Eileen Fisher Foundation  
Mr. and Mrs. Martin Ginsburg/  
Ginsburg Development, LLC  
Carlos A. González and Katherine G. Stewart  
Estate of James Hardin  
Steven L. Holley  
Robert Horwitz and Catherine Redlich  
Marvin Israelow and Dorian Goldman  
Mr. and Mrs. Farooq Kathwari/  
Irfan Kathwari Foundation, Inc.  
Omar Kathwari  
Alison L. Lankenau  
Christine Lehner/Orchard Foundation  
Mr. and Mrs. Roger Liddell  
Marilyn M. Simpson Charitable Lead Trusts  
David J. Marshall  
Jonathan Z. McKown and Calvin Tsao/  
Tsao and McKown Architects  
Richard L. Menschel/Charina Foundation, Inc.  
Deidrea Miller and Jens Knudsen  
Elizabeth D. Moore  
N. J. Nicholas Jr. and Llewellyn J. Nicholas  
John O'Shea  
Ralph E. Ogden Foundation, Inc.  
Realtime Media  
George and Gail Hunt Reeke  
Chris and Leslie Regan  
Frederic C. Rich  
Robert W. Wilson Charitable Trust  
Jack Sanderson  
Sarah I. Schieffelin Residuary Trust  
Nancy Seaman and Alan Schwartz  
Ashish and Sapna Shah  
Brian and Lindsay Shea/  
Woodcock Foundation  
Dianne Stern  
Estate of Stephen W. Tator  
TD Charitable Foundation  
The Vidda Foundation  
Dawn Watson  
Robert H. Wilder, Jr..

### Gifts of \$5,000-\$9,999

Anonymous  
American Conservation Association, Inc.  
Andrew Sabin Family Foundation  
George and Phebe Banta  
Douglas Berlin/Berlin Family Fund  
Carolyn Marks Blackwood/  
The Marks Family Foundation  
Bull's Head Foundation, Inc.  
Claremont Peconic  
Mr. and Mrs. H. Rodgin Cohen  
Joseph Cotter and Lynne Ward/  
National Resources  
David C. Cuthell and Catherine Smith-Cuthell

Susan Davidson and Allen Miller  
Jo Ann and Bert Eder  
Glynwood Center  
Suk Han  
Steven Holl and Dimitra Tschrelia  
Heather and Derrick Hopkins  
Hudson Valley Farm Hub  
Kaplan Family Foundations  
Kevin McEvoy and Barbara Epstein/The Lester  
and Phyllis Epstein Foundation, Inc.  
James Lyons  
Mrs. Jason McManus/  
DJ McManus Foundation  
Stewart Meyers  
Ken and Lindsay Morgan  
Orentreich Family Foundation  
Rodman D. and Christine W. Patton  
Marguerite O. Pitts  
Ambassador Nicholas Platt  
David and Susan Rockefeller  
Larry Rockefeller  
Simon and Loli Roosevelt  
Rebecca J. Simmons  
Ned and Tara Sullivan  
Stephanie G. Wheeler  
White Feather Farm

### Gifts of \$3,000-\$4,999

Phoebe P. Bender  
Mr. and Mrs. Thomas R. Berner  
Charlene Chai  
Mr. and Mrs. Matthew Davidson  
William and Candy Davies  
Claire Boudinot Donohue  
Merit E. Janow and Peter Young+  
Rosalind Dickinson and Michael Drillingier/  
Kingston Land Trust  
Mark Jay Menting and Laura Jean Wilson  
Liz Neumark  
Joan Sherman  
Ulster Savings Charitable Foundation  
Usha Wright

### Gifts of \$2,500-\$2,999

Anonymous (2)  
Terry Ackerman  
The Amelia Foundation  
Bijan Amini and Marcie A. Goldstein  
Lex Gamble  
John Heist and Michael Neumann  
Herrington's  
Harry H. Hill  
Mitch Jennings and Beth Dater  
Mr. and Mrs. F. Rocco Landesman  
Jean-Pierre Latrille and Yolanda Willmore  
Anna Levin  
Lovinger Family Foundation  
Deborah MacGregor  
Sheldon and Sandra Mallah/  
The Mallah Family Foundation  
Erin Thérèse Riley  
Anton F. Wilson  
Mr. and Mrs. Richard Witmer

### Gifts of \$1,000-\$2,499

Anonymous (10)  
Theresa Andersen  
Colan Andersen  
Archipelago at Home  
Jeffrey W. Baker and Cathy Franklin  
Sybil K. Baldwin

\* denotes multi-year commitment  
+ participation in Matching Gifts Program



Henry C. & Karin J. Barkhorn Foundation  
 Thomas C. Barron and Christine T. Hjorth  
 George Beane and Patricia Begley  
 Sarah Benesch  
 Stephanie Bernheim  
 Peter Bienstock  
 Hannah Borgeson  
 Robert A. Bourque  
 Jeffrey and Mary Elizabeth Bunzel  
 Adelaide Camillo and Ronald S. Gross  
 Jason and Hayley Camporese  
 Century Aggregates  
 Wally Chambers  
 Robert Christianson and Jean Blair  
 John and Maureen Clancy  
 Heidi Dolnick  
 Mr. and Mrs. Irvine D. Flinn  
 Friends of Chatham Preservation Fund  
 Gallagher  
 Anna Carlson Gannett  
 Jane and Larry Garrick  
 Marc Habert  
 Mr. and Mrs. James W. Harbison, Jr.  
 John A. Hargraves and Nancy S. Newcomb  
 Dr. and Mrs. James D. Hays/Richard and  
 Rebecca Evans Foundation  
 Anita and Robert Jacobson/  
 Benjamin Jacobson & Sons Foundation  
 Mario Johnson  
 Lowell Johnston and Frances Olivieri  
 Mr. and Mrs. Robert W. Kaelin  
 Laurie and Walter Karopczyc/Bristol Capital, Inc.  
 Burton R. Kassell  
 Charles J. Keller  
 Joseph and Jill Rae Kiernan  
 Kenny Kirsch  
 Emily J. Klein  
 Peter Klinger and Denise Sevigny  
 Janet Kraus  
 Dal LaMagna  
 Stephanie and Mark Lehrer+  
 Alice Linder and Steven Siegel  
 Mr. and Mrs. Richard Livingston  
 Pete and Bridget Lopez  
 Mr. and Mrs. Glenn D. Lowry  
 Patricia Lowy  
 Peter and Susan MacGill  
 Mr. and Mrs. Peter L. Malkin/The Malkin Fund  
 Claudio Marzollo  
 Nina Matis and Alan Gosule  
 Dr. Michael R. McGarvey  
 Seth McKee and Ellen Butowsky  
 Victoria Smith McKenzie  
 Laura P. Midgley  
 Karen E. Minturn  
 Richard and Barbara Moore  
 Mound Cotton Wollan & Greengrass  
 Mr. and Mrs. William Murphy  
 David S.E. Noble and Douglas Choo  
 Normandie Foundation, Inc.  
 Wilhelm E. Northrop  
 Nuvance Health  
 Mark O'Donnell  
 Old Souls Outfitters  
 Open Space Institute  
 Jim and Mary Ottaway  
 O. Stephen Paganuzzi and Janine King  
 PayPal Giving Fund  
 Katharine C. Pierce and Martin Catto  
 Michael and Barbara Polemis  
 Eve T. Propp/The Eve Propp  
 Family Foundation, Inc.

Richard and Susan Randolph  
 Pedro Risso  
 Richard Roark  
 Prof. and Mrs. Nicholas A. Robinson  
 Christopher du Pont Roosevelt  
 Lewis and Jacqueline Rose  
 Steve Rosenberg and Debi Duke  
 Albert and Julia Rosenblatt  
 Susan and Sidney Rothberg  
 Dr. Toni Saychek+  
 Axel and Sara Schupf  
 Elizabeth Scott  
 Lynda Shenkman  
 Allan and Julie Shope  
 Andrew and Catherine Sidamon-Eristoff  
 Anne Sidamon-Eristoff  
 Kevin D. Smith and Kali Rosenblum  
 Nevill and Karen Smythe  
 Katherine Spector  
 Sacha Spector and Daphne Uviller  
 Anne-Katrin Spiess  
 Alexis and Andrew Stack+  
 Mr. and Mrs. Christopher A. Stack  
 Kim A. Taylor and Thomas Kyle  
 Ulla Dydo Charitable Fund  
 Drusilla van Hengel  
 Drusilla Ruth van Hengel  
 Hugh and MaryAnn van Hengel  
 The Vervane Foundation  
 Kenneth Vittor and Judith Aisen  
 Elizabeth Waldstein  
 David Weinstein  
 Heidi Wendel and Joe Hirsch  
 James Wood  
 Margaret J. Wort

#### Gifts of \$500-\$999

Anonymous (10)  
 Maria Aneiro  
 Naja R. Armstrong  
 Ascienzo Family Foundation  
 Skip Backus  
 Didi Barrett  
 Michael Barrett+  
 Jutta and Hans Bertram-Nothnagel  
 Pauline Betchaver  
 Kwesi Blair  
 Mr. and Mrs. Robert L. Boothe  
 Peter L. Bray  
 Griselle Cabrera-Ramos  
 Debra L. Campbell Stillman  
 Cary Institute of Ecosystem Studies  
 Kevin and Mary Casey  
 James F. Challey  
 Michael Coogan  
 Barbara Danish and Laura Brown  
 Lou D'Arminio  
 Jonathan Decker  
 Lawrence Divney and Alicia Vergara  
 Joan Dolen+  
 Mr. and Mrs. Malcolm S. Dorris  
 Joel Erickson  
 Patrick and Kathleen Evans  
 Helen Evarts  
 Claudia Ganz  
 Andrew Gates  
 N. Richard and Monique Gershon  
 Judy Goodrich  
 Ann and Don Green  
 John A. Griesemer and Ardi Orr  
 James Guidera and Edward Parran  
 Katie Hamill

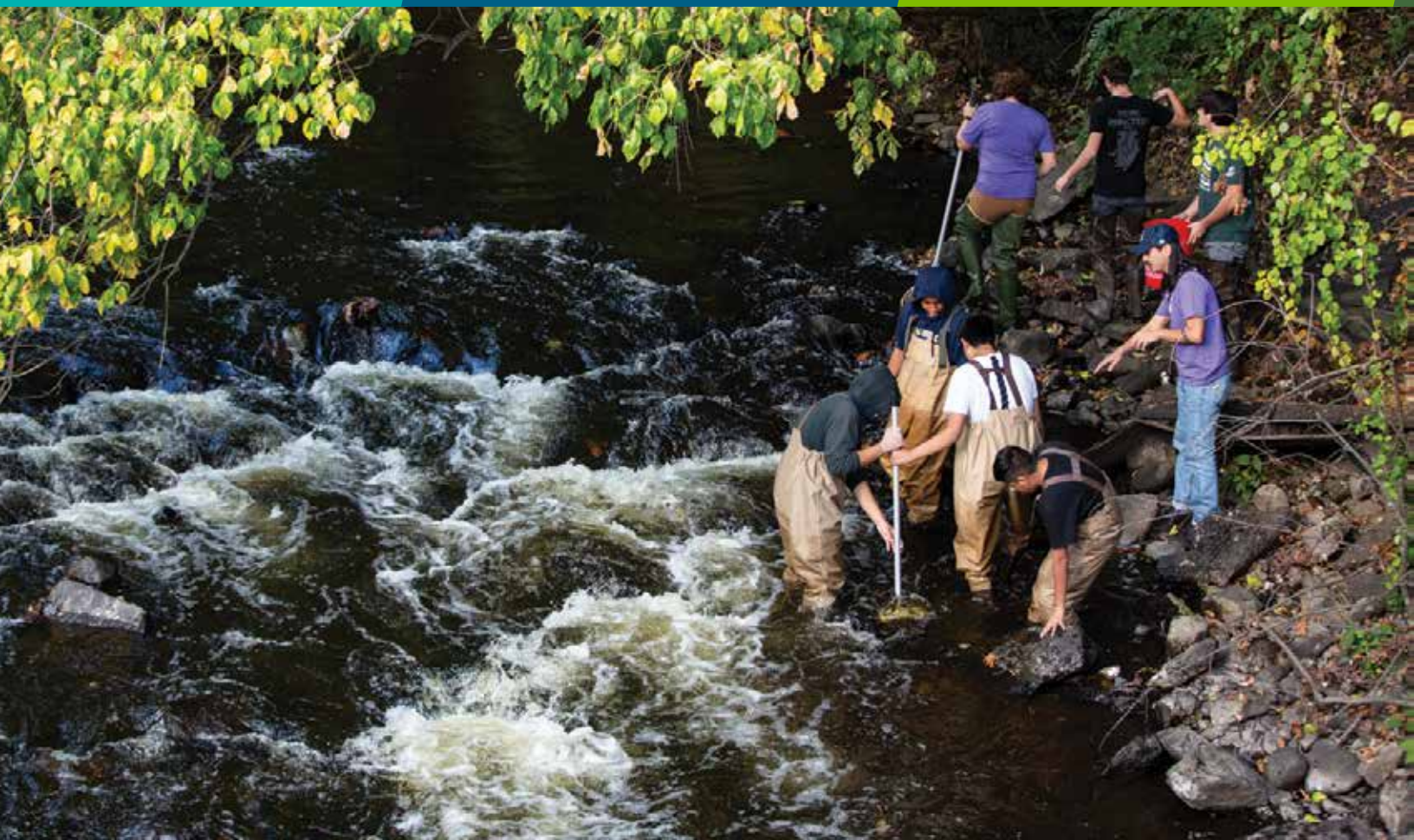
Amy Hass  
 Mr. and Mrs. William C. Janeway  
 Sipra and Glen Johnson  
 Kathryn Johnston  
 Reuel and Julia Jordan  
 Brian E. Keating and Stacy E. Styles  
 Martin Kenner and Camilla Smith  
 Thomas Kindling  
 Martin Kline  
 Susan Koff  
 Jennifer C. Krieger and Eric Siegel  
 Kuleana Fund  
 Mr. and Mrs. Michael LaFortezza  
 Mr. and Mrs. James Lessersohn  
 Mr. and Mrs. Lou Lewis/Lewis & Greer, PC  
 Zoe Lewis  
 Gloria Lewit  
 Virginia and John Loughlin  
 Charles Lovejoy  
 Michael Maslansky and Susie Coulter  
 Mr. and Mrs. Richard G. Mason  
 Kim Mathews  
 Finola McCabe  
 Charles and Debra McCambridge  
 Margo McLoone  
 Karen Meara  
 Amy Miller  
 MNLA  
 John David Moser  
 Matthew Murphy  
 Dr. and Mrs. Dennis J. Murray  
 Regina Ng  
 Alessandro and Lara Olivieri  
 Orange County Land Trust  
 Colleen Oremus  
 Anne and Fred Osborn III  
 Xavier and Penelope Pi-Sunyer  
 Susan Rabinowitz  
 Radio Kingston  
 Cynthia R. Richards  
 Mark F. Rockefeller  
 RUPCO  
 Michael Schuman  
 Steven Schwartz and Jill Horn  
 Karen M. Sharf  
 Sherman Furniture  
 Elizabeth Sidamon-Eristoff  
 Stephen Sloan and Erin Rowland  
 David J. Spector and Joslyn Levy  
 Nortrud Wolf Spero  
 Silda Walt Spitzer  
 Gretchen Stearns and Richard B. Weininger  
 Corinne Steensma and Richard Prins  
 Vicki C. Steinhart  
 Arthur O. Sulzberger, Jr.  
 Frederick L. Taber  
 Madhu and Rebecca Tadikonda  
 Don and Judy Tallerman  
 Ulster County Regional Chamber  
 Of Commerce  
 Erin Volkmar  
 George Whipple III  
 Thomas H. Wiles  
 Ross Williams  
 Donald J. Yanulavich

#### Gifts of \$250-\$499

Anonymous (13)  
 Bill Abrams  
 Adams Fairacre Farms  
 Adirondack Foundation - The Cairn Fund

Janet K. Allison  
 Jeffrey Anzevino and YouYe Chu  
 Shaye Areheart  
 Mr. and Mrs. David Arnow  
 Gail S. Aronow  
 Charles and Lauren Augello  
 Harry W. Baldwin  
 Sena Baron  
 Mr. and Mrs. Bradford S. Barr  
 Emily Beck  
 Raoul Bhavnani and Savitha Reddy  
 Debra W. Blalock and Russell Frehling  
 Daniel and Rebecca Blumberg  
 Rose Bonczek  
 Katherine Sharp Borgen  
 Chris Brown  
 David J. Brumfield and Edward M. Handlin  
 Toby and Anita Campion  
 Mr. and Mrs. Mark A. Cane  
 Katrina Cary and Manu Bammii  
 Daniel D. Chazin  
 Mr. and Mrs. Mark A. Chertok  
 Paul Childs  
 Amy Cocina and Steve Rogovic  
 Anthony Coneski  
 Kenneth E. Cool and Linda Evers Cool  
 Ruth L. Cowan  
 Bernadette Cracchiolo  
 Mary Beth Cresci  
 Erin Culbreth  
 T. Jefferson Cunningham III  
 Kay Cynamon  
 D&H Canal Historical Society  
 Sean Dague+  
 James W. Davidson  
 James W. Davis  
 Mr. and Mrs. Richard J. Davis  
 Richard DeBartolo  
 James Delaune  
 Linda Dishner  
 Danielle and Alan Engler  
 Monica Esopi  
 Esopus Township Sportsmen Club  
 Deane Evans, Jr.  
 Michael Fasman  
 Fats in the Cats Bicycle Club  
 Sarah and Robert Fitts  
 Charles A. Freni  
 Max Friedman and Tom Romich  
 Gail S. Ganter-Toback  
 Anne Gardon  
 Betsy and Larry Gile  
 Wesley Golby and Kim Bucci  
 Priscilla S. Goldfarb  
 Patty Goodwin  
 John and Katherine Greenthal  
 Gary Handel and Loretta Villani  
 Jody and Peter Harris  
 Hilary Hillman  
 Susan L. Hirsch  
 Michael Jacoff and Jeanne Vanecko  
 Amy Kacala  
 Karen Kapoor  
 Jason and Rebecca Karp  
 Mr. and Mrs. Richard D. Katzman  
 Sarah L. Kennedy and Marian Pompa  
 Thomas H. Kennedy  
 Margaret A. King  
 Christopher and Claudine Klose  
 Michael Knutson and Raquel Piazza  
 Susan Kotulak and Ronald Sencer





Peggy Lampman and Ian Nitschke  
 Joann Lang  
 Eugene L. Lebowhl  
 James and Jane Levitt  
 Rachel Levy  
 Arlene London and Elizabeth Cullers  
 Mr. and Mrs. Joel Mandelbaum  
 Susan and Jay Markowitz  
 Langdon Marsh and Ellie Putnam  
 Robert K. Marx  
 Jim Matheson and Esther Han  
 Robert May  
 Daniel McGee+  
 Jennifer McPherson  
 Peter and Carol Melewski  
 Joseph A. Messing  
 Edward and Diane Meyers  
 Jilian Mincer+  
 Linda L. Mitchell  
 David Mlodinoff  
 Geoffrey Moore  
 Susan Newman  
 Nikki Nielson  
 Steven L. Nissen  
 Oblong Books & Music  
 William Oris and Jeanne Murphy  
 Mortimer O'Sullivan  
 Erica Paley  
 Robin and David Panico  
 Paula Pevzner  
 Charles and Barbara Pierce  
 Kate Press  
 Mr. and Mrs. Robert C. Quinlan  
 Jonathan Raskin

Mr. and Mrs. John R. Reese  
 Kenneth M. Rhodes  
 Carol E. Rosenthal and Franklin Schneier  
 Howard Rothstein  
 Jeffrey Scales  
 Mr. and Mrs. Joseph Schoenberg  
 David M. Schwartz  
 Lester B. Sills and Karen A. Sokol-Sills  
 Paul and Elizabeth Silverstein  
 Anthony M. Smith  
 Shannon Smith  
 Henry H. Stebbins  
 Szilvia Szmuk-Tananbaum  
 Mary Tashjian  
 James A. Tilley  
 Kathleen Treacy  
 Russell and Wendy Urban-Mead  
 Joellen Valentine  
 Mr. and Mrs. Philip K. Van Itallie  
 Mark Varian  
 Laurie Ward+  
 Mrs. William B. Warren  
 Cari Watkins-Bates  
 John C. Weeks  
 Allison Whiting and Frederick Schroeder/  
 Resnicow Schroeder Associates, Inc.  
 Adam Yarinsky and Amy Weissner  
 Russell Yess

#### **Gifts of \$100-249**

Anonymous (41)  
 William Abrams  
 Myron Adams and Margaret Myhrum  
 Cheryl I. Agis and Richard I. Pine

Anthony Albino  
 Mr. and Mrs. J. Winthrop Aldrich  
 Allen Alter  
 V. Maureen and Charles Andola  
 Mark and Janet Andrews  
 Elizabeth Axelson  
 Janie Bailey and Michael Musgrave  
 Joan Barenholtz  
 Elisabeth Barnett  
 Deborah Behler  
 Marion Benedek  
 Amy Benesch  
 Ronnie Berish  
 Robert J. Berlin and Elinor Berlin  
 Andy Bicking and Jenny Fowler  
 Susan Binney  
 Ralph Blackwood and Nancy Nicholas  
 John Bliss  
 David Bloom  
 Richard C. Bopp  
 Harriet and David Borton  
 Garrison Botts  
 Theodore C. Brack  
 Elizabeth Bradford and James Francis  
 Joseph Brancato  
 Hal Brodie  
 John Bruning  
 Janine and Marty Brutvan  
 Paul and Marcia Buckhout  
 Mr. and Mrs. Frederick P. Bunnell  
 Robert Burke  
 Thomas D. Butler, Jr.  
 Dorothy Calvani

Neal Calvin  
 Lucille Campbell  
 John C. Cannon  
 Jason Carey  
 Mr. and Mrs. William A. Cerbone  
 Jo Chaffee  
 Katharine M. Chapman/Chapman Family Fund  
 Stacy Christensen  
 Mr. and Mrs. Bruce E. Clark  
 Kenneth R. Cobb  
 Marie Cole  
 Vivien Collens  
 John T. Compton  
 Betsy Cornwall  
 Daniel Crosta+  
 Laura Currier  
 Patricia Daly and Henry F. Schreiber  
 Scott E. Davies and Kathy Barkey  
 Mr. and Mrs. Timothy N. Delorm  
 Charles dePuthod  
 Kathleen Desmery  
 Wendy DeWolf  
 Joseph J. Dimona  
 John and Jeanne Ditton  
 Mary H. Donelik  
 Mary Elizabeth Donovan  
 Dwight Douglas  
 The John and Abby Dux Fund  
 Robert and Hannah Eckstein  
 Jason Eldridge  
 Ken Evans  
 Sheldon Evans and Martha McMaster  
 Holly Evarts



Abigail Fairman  
 Patricia Falk  
 Jonah Finkelstein  
 Tracy and David Finn  
 Jeffrey and Patricia Fisher  
 Drew S. Fixell and Victoria T. Hudson  
 Jason Frankel+  
 Joan Freeman  
 Stanley R. Freilich and Carol Marquand  
 Sheila Friedman  
 Jonathan and Lynn Friendly  
 Mr. and Mrs. Steve A. Froehlich  
 Chris Fuller  
 Dean Gallea  
 Garden Club of Orange and Dutchess  
 Counties  
 Kathryn Gavin  
 Naola Beth Gersten-Woolf  
 Mr. and Mrs. Bernhard Gerstmayr, Jr.  
 Mr. and Mrs. Floyd S. Glinert  
 Andrew and Denise Gluck  
 Mr. and Mrs. Peter C. Goss  
 Amanda Gotto  
 James J. Greene  
 John Hagedorn  
 Mr. and Mrs. Thomas J. Hall  
 Helen Hamlyn  
 Mr. and Mrs. Patrick Hanlon  
 Gail G. Hannah  
 Jeffrey Hayenga and Michael Belanger  
 Mr. and Mrs. Philip Heidelberger  
 Harry and Linda Helmus  
 Alice P. Henkin  
 Richard Hermans and Priscilla Herdman  
 Ellen Hilburg  
 Chris Hinson  
 Mr. and Mrs. Robert L. Hoguet III  
 Mr. and Mrs. Joseph C. Hoopes, Jr.  
 Hosanna Houser  
 Janet S. Hutchings  
 Steven and Robin Hutkins  
 Mr. and Mrs. Harold W. Hyatt  
 Mr. and Mrs. Leonard S. Hyman  
 Mr. and Mrs. Erik Ipsen  
 Jessica Jaffe  
 Wendy N. Jones  
 Wesley Joseph  
 Gregory and Gweneth Kaebnick  
 Howard Kallman  
 Howard Kaplowitz  
 David A. Katz and Cecilia Absher  
 John S. Katzenstein  
 Brenda E. Keener  
 Casey Kelley  
 David K. Kermani  
 Mr. and Mrs. David Kettler  
 Gerald Khermouch and Laura J. Juszczak  
 Margaret G. King  
 Lauren C. Kingman III  
 Adrian and Elizabeth Kitzinger  
 Darren Klein  
 Linda M. Kleinhenz  
 Tracey Knewitz  
 John L. Kolp and Cynthia Seibels  
 Henryka Komanska  
 Diane and John Konderwich  
 Lynne and Bob Kopac  
 David Krasnow

Erik Kulleseid  
 Margaret W. Kuras  
 Peggy Kurtz  
 Douglas A. Lancaster  
 Christina M. Lawes and Colin C. Frost  
 M. Carol Leber  
 Jonathan Ledbetter  
 Mr. and Mrs. Benjamin C.P. Lee  
 Carol B. LeFevre  
 Virginia Leitner  
 Ann Levin  
 Mr. and Mrs. Philip J. Levine  
 Kim E. Lewis  
 Rae Linefsky  
 Cynthia Listort  
 Michael Lokensgard  
 Beth Loven  
 Mr. Dieter A. Lucas and Mrs. Dana A. Lucas  
 L. H. Lumey and Lourdes Wan  
 David J. Lund  
 Nina Lynch  
 Sam Mackay  
 Walter B. Mahony III  
 Maple Leaf Associates, Inc.  
 Mr. and Mrs. William T. Maple  
 Andrew Marallo  
 Lucy W. March  
 Camilla Markarian  
 Mrs. Mary Ann S. Marshall  
 Joan A. Materna  
 Elaine Matthews  
 Michael Matts  
 Albert Mauri  
 Barbara McDonald  
 Kevin McGovern  
 Katharine McLoughlin  
 Michelle Medina  
 Paul Meissner  
 Andrea Mersel  
 Molly Messina  
 Heino F. L. Meyer-Bahlburg  
 Flo and Victor Meyers  
 Jane Milazzo  
 Charles H. Milligan and Henry H. Westmo-  
 reland  
 Judith Minissali  
 Deborah S. Mintz  
 Norman and Melanie Mintz  
 Elizabeth Moffett  
 James Molinelli  
 Gary Morgenroth  
 Martha Morrison  
 Mr. and Mrs. Philip Moss  
 Alan Mucci  
 Terence Murphy  
 Matthew Murray  
 Shahid Naeem  
 Therese M. Nagai  
 Camilla Nestor  
 Kurt Neuert  
 Eric Nevin  
 Blake T. Newton III  
 Rebecca Nidorf  
 Carol and Tom Nolan  
 Frederick N. Norgaard  
 Mr. and Mrs. Laurence J. Nummy  
 Stuart Ober  
 Lauren Oberbanscheidt

Regis Obijiski  
 Sen Oglesby  
 Holly O'Grady  
 Robert Paley and Leslie E. Schneider  
 Thomas P. Parrett  
 Christine Pascarella  
 Ann Pascetta  
 William and Andrea Paskey  
 Dan Peck, Ph.D.  
 Eva Perez  
 Jeanne Perkins  
 Jan Peterson  
 Laura Phillips  
 Mary Louise Pierson  
 Pilzer Foundation  
 Lisa and Jeff Platt  
 Robert D. Plattner and Lauri Ros-  
 marin-Plattner  
 Mr. and Mrs. Marvin R. Pollock  
 Christopher and Jennifer Post  
 Mr. and Mrs. Clifford Powell  
 Eleanor Pupko  
 Mr. and Mrs. Frederic P. Putnam  
 Gary Quist  
 Roger Rahtz  
 John Raugalis, Jr.  
 Marci Reaven  
 Heather Reddig  
 Paula Redmond  
 Jane A. Restani  
 Pam Richardson  
 William and Lea Richardson  
 Mr. and Mrs. Albino M. Rocchi  
 Matthew Rohr and Maura Neville Rohr  
 Marie Ronn  
 Sal Rosato  
 Ivan Ross  
 Jeffrey Roth  
 Christine M. Ruppert  
 Robert Rusnack  
 Barbara Russell  
 Hilary and Jenny Russell  
 Jennifer Sackett  
 Sharon Sainsbury  
 Judith Saltzman  
 Ronald Salyk  
 Judy Z. Sanford  
 Gregory Sauter  
 SBW Advisory Services LLC  
 Marcia Schlaff  
 Paul Schlender  
 Laurie Hirsch Schulz and Jay D. Schulz  
 Noel P. Schulz  
 Joel Schuman and Lynne Gilson  
 David and Martha Schwartz  
 Susan Scioli  
 Linda N. Scorsone  
 George B. Scribner  
 Theodore W. Scull  
 Barrett and Laura Seaman  
 Mr. and Mrs. Luke J. Sears  
 Sallejane Seif  
 Anne Shahmoon  
 Bob and Judith Sheridan  
 Howard Sherman and Martha Hally  
 Mr. and Mrs. Bruce D. Shriver  
 Mr. and Mrs. Simon Sidamon-Eristoff  
 Cathy Sifre

Amanda Ricken Simonetta and Jon Simonetta  
 Patricia J. Singer  
 Frank D. Skinner  
 Daniel Smith  
 John Smolinsky and Ellen Prakken  
 Julia Solomon  
 Eleonore Speckens  
 Paula Spector  
 Judith Spektor and Barry Benepe  
 Joseph Squillante and Carol Capobianco  
 Connor Stack+  
 Virginia L. Starke  
 Ruth Stevens  
 Clark Stillman  
 Peter Strom  
 Robert Strub  
 Dr. and Mrs. Gary H. Swalsky  
 Herbert R. and Barbara D. Sweet  
 Wylie and Sallie Sypher  
 Rebecca and Stephen Szulewski  
 Meghan Therry  
 Craig Thomas  
 Mr. and Mrs. Robert M. Thomas, Jr.  
 Barbara Joyce Torpie  
 Transitional Builders  
 Richard Treumann  
 John M. True  
 John F. Tweddle  
 Carol M. Ublacker  
 Jason Valentino  
 Steven Van Melis  
 Janet Van Why  
 Mr. and Mrs. Frank Van Zanten  
 Othoniel Vazquez Dominguez and Ingrid  
 Brigitta Haeckel  
 Cyd Charisse Villalba  
 Glyn Vincent  
 Navin Viswanathan  
 Mary Jo and Gary von Bieberstein  
 Keith Wagner  
 Mr. and Mrs. Jeff Walsh  
 Diane Ward  
 Mercedes Ward  
 Debra Wechsler  
 William and Yee Ling Weeks  
 Mr. and Mrs. Oskar Weidel  
 Myles and Vera Weintraub  
 William W. Weisner  
 Deborah Weltsch  
 James Werkowski and Paul Genega  
 Michael J. White  
 Judith M. Wilkinson  
 Ellen Williams  
 Mrs. Samuel D. Williams  
 Kerrie Willis  
 Mr. and Mrs. Doug Wilson  
 Thomas and Anne Winner  
 Eric Wirth  
 Rebecca Wisniewski  
 Peter and Christina Wolf  
 Barney and Erica Wolff  
 Leo C. Wurtzburger  
 Susan Wynne  
 Andrew Zucker





### Gifts in Memory of

Jaime Bernanke  
Bill Christman, Jr.  
Theodore Clement  
McGroary J. Domitrovits  
William G. Englert  
Charles M. Fales  
Charles A. Flood  
Kenneth W. Fuller  
James Goodrich  
Rachel Grasso  
Eleanor C. Kane  
Ketchum  
Barbara Lindsey  
Ardith Orr  
David Sampson  
Henry S. Sharp  
Cushing B. and Rosalie H. Snider  
John A. Stokes  
Joel Suben  
Amy Wessan

### Gifts in Honor of

Beacon Mercantile  
Joan S. Benesch  
Heather Blaikie  
David Cartmell  
Caitlin Casey and Andrew Young  
Kristin Gamble  
Kenneth Leggett  
William V. Lewit  
Zazel Loven  
Seth McKee  
Deidrea Miller and Jens Knudsen  
Alexander S. Reese  
Richard O. Rieger  
Scenic Hudson staff  
Jacob Chaim Wechsler

### Participating Matching Gift Companies and Foundations

Anonymous  
American Express Company  
Apollo  
Bank of America Matching Gift Program  
BlackRock  
Capital Group Companies  
Charitable Foundation  
Google Matching Gifts Program  
IBM Corporation  
Johnson & Johnson Family of Companies  
Mastercard Matching Gift Program  
News Corp  
ON Semiconductor  
Soros Fund Charitable Foundation  
Spotify  
Stryker  
UHG  
UMG



## Gifts-in-Kind

### The Art Effect

Atlantic Kayak Tours  
Audubon NY Hudson Valley Sanctuaries  
Badey & Watson Surveying and Engineering, D.P.C.  
John L. Barone/Rupp Pfalzgraf, LLC  
Basilica Hudson  
Tyler Blodgett  
The Brain and Body Coalition  
Samuel Carter  
Cary Institute of Ecosystem Studies  
Douglas Choo  
City of Beacon  
City of Newburgh  
City of Poughkeepsie DPW  
City of Poughkeepsie  
James Constantino, Esq./Teahan & Constantino LLP  
Country Store  
Peter Davoren/Turner Construction Company  
Chev Dixon/Hudson River Riders  
The Dutchess County Traffic Safety Board  
Ecological Citizen's Project  
The Environmental Cooperative at the Vassar Barns  
Esopus Township Sportsmen's Club, Inc.  
Fall Kill Watershed Coalition  
Fats in the Cats Bicycle Club  
Fishkill Farms  
The Franklin D. Roosevelt Hyde Park Foundation  
Geo-Integrity Atmospherics  
Glynwood Center for Regional Food and Farming  
Green Goats, Rhinebeck  
Greene Land Trust  
Halsted Excavating Inc.

Harambee Kingston NY, Inc.  
Harney & Sons Fine Teas  
Hudson River Expeditions  
Hudson River Maritime Museum  
Paul Kellar/Kellar, Kellar & Jaiven  
Kingston Equipment Rental, Inc. dba  
Baker Brothers Excavating  
Kingston Land Trust  
Kingston YMCA Farm Project  
Richard Krupp  
Lehigh Lawns & Landscaping  
Rob Levin, Esq.  
Scott P. Longstreet, Esq.  
Brian Lynch  
Main Printing  
Maple Leaf Associates Inc.  
MASS Design Group  
Mental Health America of Dutchess County  
Morrison & Foerster LLP  
Gita Nandan  
New Baltimore Conservancy  
Newburgh Waterways Center  
New City Parks  
New York-New Jersey Trail Conference  
David S.E. Noble  
Northside Collaborative  
Nubian Directions II, Inc.  
NYS DEC Hudson River Estuary Program Trees for Tribes  
NYS Department of Environmental Conservation  
NYS Office of Parks, Recreation and Historic  
Preservation/Palisades Interstate Park Commission  
Olin Partnership Limited  
Orange County Department of Planning  
Orange County Land Trust

Philip A. Oswald, Esq./Rupp Pfalzgraf LLC  
Outdoor Promise  
Paravel  
Paul, Weiss, Rifkind, Wharton & Garrison LLP  
Pershing Neighborhood Farm Volunteers  
Pierce Johnston Photography  
Poughkeepsie Farm Project  
Poughkeepsie Underwear Factory  
Paul Price  
Prime Print Shop  
Puentes  
Quassaick Creek Greenway Steering Committee  
Quassaick Creek Watershed Alliance  
Radio Kingston  
Frederic C. Rich  
Rodenhausen Chale LLP  
Robert Rodriguez, Jr.  
Elizabeth Ryan/Stone Ridge Orchard  
Scenic Hudson Volunteers  
Sherwood's Power Equipment Inc. (Newburgh)  
SMPR Title Agency  
Stamford Tent & Event Services  
Stortz Lighting  
SUNY Orange Kaplan Hall  
Town of Esopus - Water Chestnut Harvester  
Town of New Windsor  
Trillium Invasive Species Management, Inc.  
The (Un)Known Project/IDEAS xLab,  
Hannah Drake & Josh Miller  
Washington Estates Transport Inc.  
Heidi Wendel  
West Esopus Land Owners Association, Inc. (WELOA)  
Wild Earth  
John Wood/Hill-N-Dale Abstracters, Inc.







## ON THE GROUND: Grazing Goats to the Rescue

Poets' Walk Park in Red Hook is known for its rustic pavilions and benches that allow visitors to pause and take in the majestic river and mountain vistas. Then there are the rolling, windswept meadows. These areas are mowed on a rotating basis to ensure there is always habitat for monarch butterflies, other insects, and birds that pass through the park.

A few years ago the staff stopped mowing a particularly steep slope, due to land erosion as well as safety concerns regarding operating a tractor there. The result? Dense vegetation so overgrown with buckthorn, multiflora rose, and other invasive species that staff could not walk through it.





An eco-friendly (and adorable) answer to managing the invasive plants arrived last summer when 44 goats moved onto the meadow and immediately got to work munching on the thick growth. With their enormous appetites, the goats swiftly devoured all leafy greens in their path.

Goats are increasingly being used as an effective alternative to both mowing and herbicides. From improving biodiversity to reducing carbon, there are multiple benefits. Goats are able to graze on steep terrain that people and cattle can't climb while their manure acts as a fertilizer, improving soil health and preventing erosion. Once the animals have completed their work, the grounds are often much more suitable for native plants to take hold.





# Board of Directors

The following board members served during the fiscal year ending June 30, 2024.

## Scenic Hudson Officers and Directors

**Richard Krupp** <sup>Chair</sup>  
*Managing Partner, Pierpoint Capital; Managing Director, Krupp Family Office; Board Director, Krupp Foundation; Board Director, Berkshire Residential Investments (BRI); Board Director, CoreFlow, LTD*

**Carl H. Loewenson, Jr.** <sup>Co-Vice Chair</sup>  
*Principal, Loewenson PC; Board of Directors, Hudson Valley Shakespeare Festival; Board of Directors, The Exoneration Initiative*

**Usha Wright** <sup>Co-Vice Chair</sup>  
*President/ Chair, SHARE Africa; Chair, Piermont Zoning Board of Appeals; Board Member, Hudson Highlands Fjord Trail; Member, Piermont Comprehensive Plan Committee; Member, Piermont Community Center Committee; Member, Piermont Arts Commission; Member, National Academies of Sciences Committee on Assessing and Improving Strategies for Preventing, Countering, and Responding to Weapons of Mass Destruction Terrorism*

**Edward B. Whitney** <sup>Treasurer</sup>  
*Dillon, Read & Co. Inc. (Retired); Board of Directors, Hudson Valley Shakespeare Festival; Advisory Board, Constitution Marsh Audubon Center and Sanctuary; President, Early Music Foundation; Director Emeritus, American Rivers*

**Judah S. Kraushaar** <sup>Asst. Treasurer</sup>  
*Roaring Brook Capital; Owner, Meadowland Farm*

**Mario Johnson** <sup>Secretary</sup>  
*Director, Nubian Directions YouthBuild & AmeriCorps Program; Secretary, Poughkeepsie Alliance Board of Directors; Member, Poughkeepsie Children's Cabinet; Chair, City of Poughkeepsie Corey Ingram Hero's Walk of Champions; Member, Northside Collaborative Committee*

**Alexander Reese** <sup>Ex Officio</sup>  
*Founder, Obercreek Farm; Co-Founder, Obercreek Brewing Company; Board of Directors, Glynwood; Co-Chair, Boscobel House and Garden; Chair, Hudson River Valley Institute Advisory Board*

**Elyse Arnow Brill**  
*Managing Partner, Alpacatraz, LLC; Advisory Board, RiverKeeper; Member of Land Planning Committee, Hudson to Housatonic Regional Conservation Partnership; Chair, Open Space Acquisition Committee for the Town of Pound Ridge; Chair, Comprehensive Plan Update Committee for the Town of Pound Ridge*

**Thomas D. Butler, Jr.**  
*Former Mayor, Village of Tarrytown, NY; Phelps Hospital Community Board, Sleepy Hollow, NY; Director, AECOM-Tishman Construction Corp of NY (Retired); Colonel, U.S. Army Corp of Engineers (Retired)*

**Charlene Chai**  
*CFO/Partner, Tivoli Mushrooms; CEO/Founding Partner, GO Mushrooms*

**Stephen M. Clement, III**  
*Headmaster, The Browning School (Retired); Trustee, Millbrook School, Millbrook, NY; Trustee Emeritus, Robert College, Istanbul, Turkey; Clement Trustee, Western New York Chapter, American Red Cross*

**Rebecca Cohen**  
*Astor Courts Conservancy*

**Michael P. Dowling**  
*President, Dowling Foundation; Director, Board Executive Committee, Gift to Colorado Campaign Chair, Colorado Open Lands*

**Richard K. Elbaum**  
*Senior Counsel, NYC Economic Development Corporation; Founding Partner, Lakefront Consulting LLC; Former Senior Vice President and Assistant General Counsel, A+E Networks; LLM in Environmental & Energy Law at NYU Law School*

**Kristin Gamble**  
*Senior Managing Director, American Capital Management; President of the Hudson-Athens Lighthouse Preservation Society*

**Andrew Gelb**  
*Executive Vice President, Fiserv*

**Carlos A. González**  
*Director of Client Asset Management, Oriental Group*

**James C. Goodfellow**  
*Chairman, Fiduciary Trust Company International (Retired)*

**Marjorie L. Hart**  
*President's Circle, Land Trust Alliance*

**Omar Kathwari**  
*Founder, Avatar Trading Group, LLC*

**Charles L. Kerr**  
*Board Chair, The Greater Irvington Land Conservancy Foundation, Inc.; Board Member and Secretary, NEPP, Inc. d/b/a Pollinator Pathway; Board Member, Lawyers Committee for Civil Rights Under Law; Board Chair, Friends of the Ardsley-on-Hudson Train Station, Inc.; Board Member, Irvington Historical Society; Board Member, Ardsley Park Property Owners Association, Inc.; Member, Village of Irvington Housing Committee; Ambassador, New Yorkers for Culture and Arts*

**Robert C. Lieber**  
*Executive Managing Director, Island Capital Group/ C-III Capital Partners; Former Deputy Mayor, Economic Development under NYC Mayor Michael R. Bloomberg; Urban Land Institute; Board Member, Central Park Conservancy; Board Member, Greater New York City YMCA; Former Chair, Current Executive Committee Member, Zell/Lurie Real Estate Center, The Wharton School*

**Zack McKown**  
*Tsao & McKown Architects; Design Trust for Public Space; Advisory Board, Bhutan Foundation*

**W. Patrick McMullan**  
*Managing Director and Chairman, U.S. Healthcare Investment Banking, Greatlays Capital (Retired); Senior Vice Chairman, The Good Dog Foundation*

**Deidrea Miller**  
*Communications Consultant*

**Elizabeth D. Moore**  
*Director, Southwest Power Pool; Former Senior Vice President and General Counsel, Consolidated Edison of New York; Board Vice Chair, Southwest Power Pool*

**Gil Raviv**  
*Millennium Management; Advisory Board, College of Arts and Sciences, Cornell University*

**Frederic C. Rich**  
*Author; Senior Counsel, Sullivan & Cromwell LLP; Vice Chair, Battery Conservancy; Board of Directors, Hudson Highlands Land Trust; Board of Directors, Hudson Valley Shakespeare Festival; Board of Directors, Hudson Highlands Fjord Trail*

**Richard O. Rieger**  
*Inkblot Capital LLC*

**Jennifer Ehrlich Rimmer**  
*Board Member, Fernandina Beach Main Street Chapter, American Red Cross*

**Maarten R. van Hengel**  
*Partner and Senior Advisor, Brown Advisory (Retired); Director, Metallized Carbon Corporation; Director and Investment Committee Chair, Netherlands-American Foundation*

**Dawn Watson**  
*Dawn Watson Photography; Davada II; American Society of Media Photographers; Land Art Agency and Collective; Salon des Beaux Arts; Kiesendahl + Calhoun Fine Art, Ltd.*

**Suzy Welch**  
*NYU Stern School of Business; The Brunswick Group; Upside Foods; Board Member, Humane Society of the United States; Board Member, ANGI*

## Honorary Directors

**Anne P. Cabot**  
**Barnabas McHenry**  
**David Redden**  
**Laurance Rockefeller**  
**Alexander E. Zagoreos**

## President's Council of Advisors

**Christopher Buck**  
**Andrea Soros Colombel**  
**Peter J. Davoren**  
**Thomas W. Jones**  
**Susan C. Livingston**  
**Frank Martucci**  
**N.J. Nicholas Jr.**  
**Simon Roosevelt**  
**Jennifer Speers**

## The Scenic Hudson Land Trust Officers and Directors

**Alexander Reese** <sup>Chair</sup>  
**Dawn Watson** <sup>Vice Chair</sup>  
**Edward B. Whitney** <sup>Treasurer</sup>  
**Richard H. Klapper** <sup>Secretary</sup>  
*Of Counsel, Sullivan & Cromwell LLP*

**Cybele Fishman**  
*Cybele Fishman, MD; Fellow of the American Academy of Dermatology*

**Kristin Gamble**

**James C. Goodfellow**

**Andrew Gundlach**  
*President and Co-CEO, Bleichroeder LP; Director, First Eagle Holdings*

**Daniel J. Kramer**  
*Partner, Paul, Weiss, Rifkind, Wharton & Garrison LLP; Board of Directors, Hudson Valley Shakespeare Festival; Board of Directors, Hudson Highlands Land Trust; Board of Directors, Hudson Highlands Fjord Trail; Trustee, Scenic Hudson Land Trust; Emeritus Trustee, Kenyon Review; Board Member, NYU Law School's Center for Civil Justice; Board Chair and Co-Executive Director, Paul, Weiss Center to Combat Hate*

**Richard Krupp**

**Douglas S. Land**  
*Board Member, Land Trust Alliance; Director, Hudson Highlands Land Trust Board*

**Frederic C. Rich**

**Jay Saunders**  
*Jennison Associates, LLC*

**Leigh Seippel**  
*Board Member, Trout Unlimited; Checkerboard Film Foundation*

**J.E. Hoke Slaughter**  
*Partner, Strategic Advisory Group at PJT Partners; Board Member, Teaching Matters*

**Ned Sullivan**

## Governance Committees

### Executive

**Richard Krupp** <sup>Chair</sup>  
**Carl H. Loewenson, Jr.** <sup>Co-Vice Chair</sup>  
**Usha Wright** <sup>Co-Vice Chair</sup>  
**Edward B. Whitney** <sup>Treasurer</sup>  
**Judah S. Kraushaar** <sup>Asst. Treasurer</sup>  
**Mario Johnson** <sup>Secretary</sup>  
**Alexander Reese** <sup>Ex Officio</sup>

### Audit

**Edward B. Whitney** <sup>Chair</sup>  
**Kristin Gamble**  
**James C. Goodfellow**  
**Robert C. Lieber**  
**W. Patrick McMullan**  
**Frederic C. Rich**  
**Richard Krupp** <sup>Ex Officio</sup>

### Board Membership and Governance

**Carl H. Loewenson, Jr.** <sup>Chair</sup>  
**Stephen M. Clement, III**  
**Cybele Fishman**†  
**Mario Johnson**  
**Judah S. Kraushaar**  
**Jennifer Ehrlich Rimmer**  
**Richard Krupp** <sup>Ex Officio</sup>

### Executive Compensation

**Stephen M. Clement, III** <sup>Chair</sup>  
**Andrew Gelb**  
**Marjorie L. Hart**  
**Kristin Gamble**  
**Usha Wright**  
**Richard Krupp** <sup>Ex Officio</sup>

### Finance

**Edward B. Whitney** <sup>Chair</sup>  
**Charlene Chai**  
**Andrew Gelb**  
**Charles L. Kerr**  
**Richard O. Rieger**  
**Richard Krupp** <sup>Ex Officio</sup>

### Human Resources

**Usha Wright** <sup>Chair</sup>  
**Richard K. Elbaum**  
**Andrew Gelb**  
**Marjorie L. Hart**  
**Elizabeth D. Moore**  
**Gil Raviv**  
**Richard Krupp** <sup>Ex Officio</sup>

### Investment

**Maarten R. van Hengel** <sup>Chair</sup>  
**Jesse Clinton\***  
**Kristin Gamble**  
**Carlos A. González**  
**Andrew Gundlach**†  
**Richard O. Rieger**  
**Edward B. Whitney**  
**Richard Krupp** <sup>Ex Officio</sup>

### Legal

**Carl H. Loewenson, Jr.** <sup>Chair</sup>  
**Richard K. Elbaum**  
**Charles L. Kerr**  
**Richard H. Klapper**†  
**Daniel J. Kramer**†  
**Gil Raviv**  
**Frederic C. Rich**  
**Richard Krupp** <sup>Ex Officio</sup>

## Program Committees

### Advocacy

**Michael P. Dowling** <sup>Chair</sup>  
**Richard K. Elbaum** <sup>Vice Chair</sup>  
**Thomas D. Butler, Jr.**  
**Stephen M. Clement, III**  
**James C. Goodfellow**  
**Marjorie L. Hart**  
**Mario Johnson**  
**Douglas S. Land**†  
**Susan C. Livingston\***  
**David H. Mortimer\***

### N.J. Nicholas Jr.\*

**Jennifer Ehrlich Rimmer**  
**Katherine Spector\***  
**Julia Widdowson\***  
**Katrina Wyman\***  
**Richard Krupp** <sup>Ex Officio</sup>

### Government Relations

**Douglas S. Land**† <sup>Chair</sup>  
**Elyse Arnow Brill**  
**Richard K. Elbaum**  
**Marjorie L. Hart**  
**Mario Johnson**  
**Judah S. Kraushaar**  
**Stew Meyers\***  
**Richard Krupp** <sup>Ex Officio</sup>

### Headquarters

**Alexander Reese** <sup>Chair</sup>  
**Kristin Gamble**  
**James C. Goodfellow**  
**Judah S. Kraushaar**  
**Robert C. Lieber**  
**Zack McKown**  
**J.E. Hoke Slaughter**†  
**Robert Wilder, Jr.\***  
**Richard Krupp** <sup>Ex Officio</sup>

### Parks and Community Engagement

**Richard H. Klapper**† <sup>Chair</sup>  
**Cybele Fishman**† <sup>Vice Chair</sup>  
**Rebecca R. Cohen**  
**Andrew Gelb**  
**Carlos A. González**  
**Omar Kathwari**  
**Charles L. Kerr**  
**Kim Mathews\***  
**Deidrea Miller**  
**David H. Mortimer\***  
**Jennifer Ehrlich Rimmer**  
**Jay Saunders**†  
**J.E. Hoke Slaughter**†  
**Dawn Watson**  
**Richard Krupp** <sup>Ex Officio</sup>

### River Cities

**Judah S. Kraushaar** <sup>Chair</sup>  
**Richard O. Rieger** <sup>Vice Chair</sup>  
**Corey Allen\***  
**Elyse Arnow Brill**  
**Richard K. Elbaum**  
**Owen Gutfreund\***  
**Mario Johnson**  
**Desiree King\***  
**Robert C. Lieber**  
**Carl H. Loewenson, Jr.**  
**Zack McKown**  
**Tim McQueen\***  
**Larisa Ortiz\***  
**Gil Raviv**  
**Christopher Scholz\***  
**Dawn Watson**  
**Edward B. Whitney**  
**Wheelock Whitney III\***  
**Richard Krupp** <sup>Ex Officio</sup>

### Science, Climate and Stewardship

**Elyse Arnow Brill**, <sup>Chair</sup>  
**Danielle Begley-Miller, Ph.D.\***  
**Michael P. Dowling**  
**Josh Ginsberg\***  
**Laura Heady\***  
**Zion Klos\***  
**Douglas S. Land**†  
**Zack McKown**  
**W. Patrick McMullan**  
**David Redden\***  
**Bill Schuster\***  
**Keri VanCamp\***  
**Maarten R. van Hengel**  
**Julia Widdowson\***  
**Usha Wright**  
**Richard Krupp** <sup>Ex Officio</sup>

\*Non-board member

† Scenic Hudson Land Trust Board member only



The following are our staff members as of November 2024.

## EXECUTIVE TEAM

Ned Sullivan  
*President*

Erin Thérèse Riley  
*Senior Vice President*

Jason Camporese  
*Chief Finance & Operations Officer*

Seth McKee  
*Executive Director of The Scenic Hudson Land Trust, Inc. & Land Programs*

Pete Lopez  
*Executive Director of Policy, Advocacy & Science*

Amy Kacala  
*Executive Director, Hudson Highlands Fjord Trail*

Anna D. Tetrault  
*Executive Assistant to the President*

Malorie Seeley-Sherwood  
*Executive Assistant to the Senior Vice President*

Melissa Masson  
*Executive Assistant to the Chief Finance & Operations Officer*

Bethe Myers  
*Executive Assistant to the Executive Director of The Scenic Hudson Land Trust & Land Programs*

Ann Lucente  
*Executive Assistant to the Executive Director of Policy, Advocacy & Science*

Molly Lindsay  
*Executive Assistant, Hudson Highlands Fjord Trail*

## DIRECTORS

Theresa Andersen  
*Director of Human Resources (outgoing)*

J. Jeffrey Anzevino  
*Director of Land Use Advocacy*

Stephen Ballentine  
*Director of Environmental Advocacy, Government Relations & Public Policy*

Griselle Cabrera-Ramos  
*Director of Finance*

Audra Cox  
*Director of Human Resources (incoming)*

Riley Johndonnell  
*Director of Creative Strategies & Communications*

MJ Martin  
*Deputy Executive Director, Hudson Highlands Fjord Trail*

Duane Martinez  
*Director of River Cities Program*

Drew Polinsky  
*Director of Park & Facilities Management, Hudson Highlands Fjord Trail*

Pia Ruisi-Besares  
*Director of Science, Climate & Stewardship*

Rob Rusnack  
*Director of Finance & Operations, Hudson Highlands Fjord Trail*

Rita D. Shaheen  
*Director of Parks & Community Engagement*

Cari Watkins-Bates  
*Director of Land Conservation*

## PROGRAM STAFF

### Climate & Community Programs

Kelly Boling  
*Senior Program Officer*

### Land Conservation

Annie Christian  
*Land Project Manager/ Agricultural Specialist*

Steven DiFalco  
*GIS & Land Data Manager*

Emily Hague  
*Assistant Director of Land Conservation*

Michael Knutson  
*Senior Land Project & Conservation Easement Program Manager*

Eva Perez  
*Administrative Assistant*

Pamela Richardson  
*Senior Land Conservation Attorney*

Emily Stern  
*Conservation Easement Stewardship Associate*

Othoniel Vazquez Dominguez  
*Senior GIS Analyst & Landscape Ecologist*

Kevin Webb  
*Senior Land Project Manager*

### Parks and Community Engagement

Morgan Bennett  
*Parks Stewardship Coordinator*

Onyx Beytia  
*Parks Maintenance Associate*

Heather Blaikie  
*Senior Park Planner*

Geoff Carter  
*Senior Parks Manager*

Anthony Coneski  
*Senior Community Projects Manager*

Jessica Estores  
*Administrative Assistant to the Parks & Community Engagement and River Cities Teams*

Charlie Gott  
*Parks Maintenance Associate*

Matt Kennedy  
*Sojourner Truth State Park Manager*

Jeremy Kenny  
*Parks Repair & Maintenance Technician*

Joseph Kiernan  
*Senior Parks Project Manager*

Jeremy Laplanche  
*SCA Member/ Volunteer Coordinator*

Jared Pazienza  
*Parks Operations Coordinator*

Sean Ryan  
*Parks Maintenance Associate*

### Policy, Advocacy & Outreach

Johnathan Clark  
*Advocacy Attorney*

Carli Fraccarolli  
*Government Relations Manager*

Duvan Lopez  
*Policy Coordinator*

### River Cities Program

Carley Franklin-Hughes  
*Urban Farmer, Pershing Ave. Park & Neighborhood Farm*

Kayla Patel  
*Urban Planner Project Manager*

Julia Raskin  
*Senior Project Manager*

Kali Ticehurst  
*SCA Member/Community Engagement Assistant*

Joshua Walker  
*Assistant Grower, Pershing Ave. Park & Neighborhood Farm*

### Science, Climate & Stewardship

Dan Smith  
*Natural Resources Manager*

Alex Wolf  
*Conservation Scientist*

### Hudson Highlands Fjord Trail

Lori Moss  
*Communications Manager*

Rebecca Ramirez  
*Community & Visitor Relations Manager*

Emily Selover  
*Communications Coordinator*

Jennifer Vitagliano  
*Development Manager*

### Communications

Olivia Abel  
*Staff Copywriter*

Jo-Anne Asuncion  
*Photo & Creative Services Associate*

Seth Martel  
*Design & Creative Services Manager*

Erin Nylen  
*Communications Operations Manager*

CK Sanders  
*Comms Technology, Tools & Platforms Coordinator*

### Development

Jody Harris  
*Assistant Director of Development – Stewardship*

Margaret A. King  
*Assistant Director of Development – Strategy*

Amali Knobloch  
*Donor Relations Associate*

Veronica Renzo  
*Database Coordinator*

Matt Rohr  
*Grant Writer & Development Associate*

### Operations & Finance

Caroline Alsup  
*Headquarters Project Manager*

Marquis Ashe  
*Accounting & Human Resources Associate*

Brianna Mastropolo  
*Senior Accountant*



## Scenic Hudson, Inc.

ScenicHudson.org

Scenic Hudson, Inc., is a charitable, nonprofit corporation classified by the Internal Revenue Service as a publicly supported tax-exempt organization under Section 501(c)(3) of the Internal Revenue Code. A copy of the latest financial report may be obtained by writing to Scenic Hudson, Inc., or to the New York State Attorney General's Office, Charities Bureau, 120 Broadway, New York, NY 10271.

## PHOTO CREDITS:

Cover: Jeff Mertz  
p.2: Tyler Blodgett  
p.4: Kristin Touw/Wagon Wheel Farm, Goshen NY  
p.5: Robert Rodriguez, Jr.  
p.6: (top) Scenic Hudson staff; (bottom) © forscience, (CC BY-NC)  
p.7: Pierce Johnston  
p.8: Jeff Mertz  
p.9: Robert Rodriguez, Jr.  
p.10: (top) MASS Design (bottom) Tyler Blodgett  
p.11: Tyler Blodgett  
p.12: J. Jeffrey Anzevino  
p.13: iStock  
p.14: Pierce Johnston  
p.15: Riley Johndonnell  
p.16: Pierce Johnston  
p.17: Jeff Mertz  
p.18: Adam Deen/SunCommon  
p.19: Jeff Mertz  
p.20: (top) Jo-Anne Asuncion; (bottom) Jeremy Laplanche  
p. 21: Seth Martel  
p.22-23: Jeff Mertz  
p.26: Karen Pearson  
p.28: Jeff Mertz  
p.29: Outdoor Promise  
p.30-31: Jeff Mertz

Copyright © 2024  
Scenic Hudson, Inc.

Written/designed  
by Scenic Hudson staff

Main Printing, Poughkeepsie, NY.  
Printed on acid and elemental chlorine-free paper from well-managed forests, run according to principles in full respect for high environmental, social, and economic standards at all stages of production.





