



NEW YORK'S STATE PARKS: ECONOMIC ENGINE FOR THE STATE

Prepared for Parks & Trails New York by Political
Economic Research Institute



PARKS PAY OFF

Using one year of data from January 2021 to December 2021, the study finds that **New York's State Park System, due to substantial multi-year increases in visitation, is now a major anchor for the New York State economy.** In terms of GDP, labor income, and overall economic importance, the state park system has a comparable impact to the agricultural sector.

ABOUT THE NEW YORK STATE PARK SYSTEM

The mission of the Office of Parks, Recreation and Historic Preservation (OPRHP) is to provide safe and enjoyable recreational and interpretive opportunities for all New York State residents and visitors and to be responsible stewards of our valuable natural, historic, and cultural resources. OPRHP's mission is carried out through its operation of 250 parks, historic sites, recreational trails, golf courses, boat launches and more, providing safe and attractive facilities, accessible and affordable services, and quality visitor experiences.



78
MILLION
visits

to State Parks in
2021 resulted in



\$5.6
BILLION
in visitor spending

Of the estimated 78 million visits, **47 million came from non-locals** traveling from beyond their home community. All visitors spent an estimated \$5.6 billion in total on a variety of expenses, including: park entrance fees; gift shops; recreational equipment; food and beverages; gas stations; local transportation; lodging; and other visitor-related expenses.

Total visitation to New York's State Park system generated*:



\$5.8
BILLION
in sales



\$2.5
BILLION
in labor income



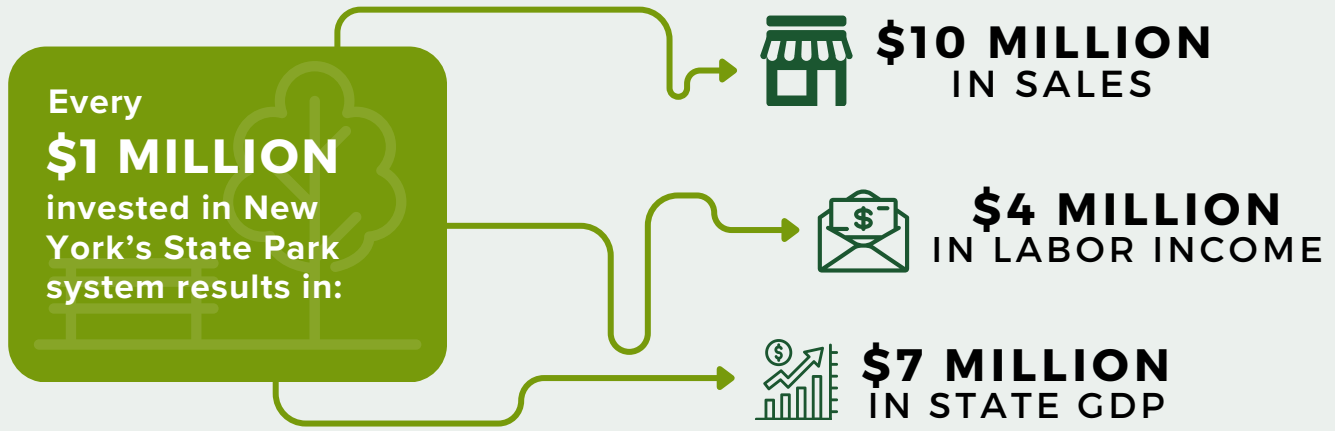
\$3.7
BILLION
in state GDP

* From combined visitor spending and government investment



New York's investments create economic benefits in communities across the state.

In 2021, NYS OPRHP's capital and operating expenditures totaled \$557 million. Capital and operating investments funnel millions of dollars directly into local economies, benefiting engineering and design firms, local suppliers, small businesses, and service providers that support the ever-growing number of visitors.



The park system is a significant contributor to the state's tourism economy.

Non-local visitors to the park system:



GENERATE
\$2.9 BILLION
IN SALES



CONTRIBUTE
\$1.9 BILLION
TO THE
STATE'S GDP



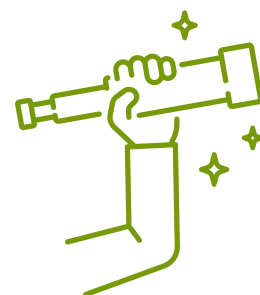
PROVIDE
WORKERS WITH
\$1.3 BILLION
IN INCOME

Methodology

Data for this report was sourced from the Office of Parks, Recreation and Historic Preservation, I Love NY/Empire State Development, and comparable regional and national studies on the impact of tourism and outdoor recreation on localized economies. PERI utilized Input-Output (I-O) Models via the IMPLAN service to provide a comprehensive overview of the economy. They document linkages between different sectors, including businesses engaging in inter-industry transactions and purchases made by households and the government. Such models are used to measure the direct effects of a set of purchases and indirect effects throughout the supply chain. I-O Models can provide accurate and detailed analysis of economic impacts from a particular set of purchases or actions by incorporating a more holistic vision of their ties to other industries and localities.

Looking Ahead

Parks & Trails New York is committed to conducting a deeper analysis of the economic impact of our beloved parks system during its Centennial Year. We remain focused on expanding our thought leadership at the intersection where public lands, economic resiliency, and fostering livability in the Empire State converge.



About PTNY & Our Partners



Parks & Trails New York is New York's leading statewide advocate for parks and trails, dedicated since 1985 to improving our health, economy, and quality of life through the use and enjoyment of green space. Our mission is to expand, protect and promote a network of parks, trails, and open spaces throughout our state for use and enjoyment by all.



The Political Economy Research Institute (PERI) promotes human and ecological well-being through our original research. Our approach is to translate what we learn into workable policy proposals that are capable of improving life on our planet today and in the future. PERI is an independent unit of the University of Massachusetts, Amherst.



The Natural Heritage Trust has worked to preserve New York's public lands and enhance programs at state parks and historic sites for over 50 years. Our mission is to receive and administer gifts, grants and contributions to further public programs for parks, recreation, cultural, land and water conservation and historic preservation purposes of the State of New York.

To learn more about the economic impact of our state park system, including methodology, key outcomes and to access the full report please, visit our website at ptny.org.

For questions regarding the Executive Summary and the implications on visitation, usage, and policy development, please email Will Cote at wcote@ptny.org.